

DATA SHEET

DUAL LANCES



Stainless Steel **33200**
Model:

Zinc Plated **33201**
Model:



33200 Model Shown

SPECIFICATIONS	U.S.	Metric
MODEL 33200		
Maximum Flow	10.5 gpm	40 lpm
Maximum Pressure	3650 psi	250 bar
Maximum Temperature	320° F	160° C
Inlet Fitting	¼" BSP(M)	¼" BSP(M)
Nozzle Fitting (2)	¼" NPT(F)	¼" NPT(F)
Weight	47.2 oz	1.34 kg
Overall Length	47.2"	1090 mm
MODEL 33201		
Maximum Flow	10.5 gpm	40 lpm
Maximum Pressure	3650 psi	250 bar
Maximum Temperature	320° F	160° C
Inlet Fitting	¼" BSP(M)	¼" BSP(M)
Nozzle Fitting (2)	¼" NPT(F)	¼" NPT(F)
Weight	44.8 oz	1.27 kg
Overall Length	35"	890 mm

Use only at above specifications to ensure proper gun life and performance.

FEATURES

- Ventilated square nylon insulator provides comfort and safety during operation.
- Rotating handle allows for easy switching between high and low-pressure nozzles.
- Optional lengths for specialized cleaning.
- Ideal for use with an adjustable chemical injector.

SELECTION

Select a lance to match the system flow, pressure requirements, temperature, and application. Select zinc plated or stainless steel to meet chemical compatibility requirements.

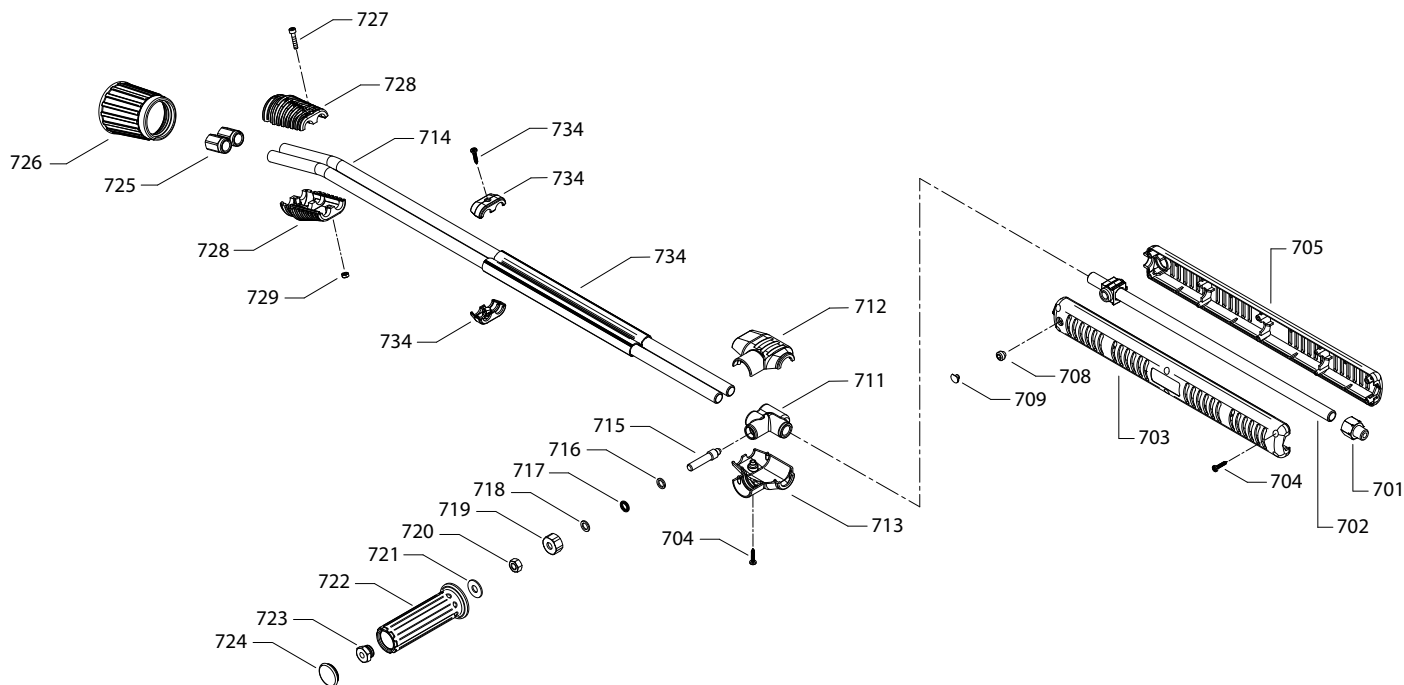
INSTALLATION

Install these single lances to any ¼" fitted gun. Use PTFE thread tape or pipe thread sealant to ensure leak proof. Thread a high-pressure nozzle into one side of the nozzle holder. Thread a low-pressure nozzle into the other side of the nozzle holder.

OPERATION

Fluid flow through the lance occurs by squeezing the trigger on the gun. Rotate the front handle to switch flow between the two different nozzles in the nozzle holder.

EXPLODED VIEW



PARTS LIST

ITEM	PART NUMBER	DESCRIPTION	QTY
701	32368	BB Adapter (1/4" BSP[M])	1
702	—	SS Tube (1/4") Model 33200	1
	—	ZP Tube (1/4") Model 33201	1
703	—	NY Cover, Lance (Left)	1
704	—	STZP Screw, Self Tapping (M3 x 18)	8
705	—	NY Cover, Lance (Right)	1
706	—	BB Frame, Cover	1
708	32870	STZP Screw, Cover (M10 x 8)	1
709	32871	NY Plug, Cover	1
711	—	BB Housing	1
712	—	NY Insulator, Lance (Upper)	1
713	—	NY Insulator, Lance (Lower)	1
714	—	SS Tube (1/4") Model 33200	2
	—	ZP Tube (1/4") Model 33201	2
715	—	S Valve, Needle	1
716	—	STZP Spacer, Valve	1
717	—	FPM O-Ring	1
718	32873	PTFE Backup Ring	1

ITEM	PART NUMBER	DESCRIPTION	QTY
719	—	BB Nut (M18)	1
720	126521	STZP R Nut (M18 x 1.25)	1
721	—	STZP Washer (M18)	1
722	—	NY Handle	1
723	—	BB Plug, Handle	1
724	—	NY Plug, Grip	1
725	32053	STZP Holder, Nozzle (1/4" NPT[F])	2
726	—	RBR Guard, Nozzle	1
727	—	STL Screw (M4 x 20)	2
728	—	NY Protector Extension	2
729	—	STL Nut (M4)	2
734	—	— Kit, Clamp	1
735	32864	NY Guard, Nozzle assembly (Includes: 726–729)	1
736	32865	— Insulator, Assembly (Includes: 703–706)	1
737	32867	— Cover, Housing, Assembly (Includes: 704, 712, 713)	1
738	32866	NY Handle, Assembly (Includes: 715–724)	1
740	39012	NBR Kit, O-Ring (Includes: 716, 717, 718)	1

Italics are optional items. R Components comply with RoHS Directive.

MATERIAL CODES (Not Part of Part Number):

BB=Brass FPM=Fluorocarbon NBR=Medium Nitrile (Buna-N) NY=Nylon
PTFE=Pure Polytetrafluoroethylene RBR=Rubber S=304SS SS=316SS
STL=Steel STZP=Steel/Zinc Plated ZP=Zinc Plated

TROUBLESHOOTING

Water leaking at fitting connection	• Check fitting for proper sealant and reconnect to gun
Water leaking at nozzle	• Check nozzle holders for proper sealant and reconnect
Broken nozzle protector	• Replace to ensure nozzle life

⚠ WARNING

SKIN PUNCTURE HAZARD

Do not allow spray to contact any part of the body or animals. Pumped liquids under high pressure can pierce skin and underlying tissue or can deflect debris leading to serious personal injury or death.

1. Relieve all line pressure in the inlet line to the pump and discharge line from the pump before performing any maintenance on the gun.
2. When high-pressure gun is not in use, set safety trigger lock (safety latch) to avoid accidental high-pressure operation and personal injury or property damage.
3. Do not check for leaks with hand. Use a piece of cardboard to check for leaks.
4. Review cleaning procedures to minimize heavy back blasting.
5. Wear adequate safety equipment and clothing when operating a high-pressure sprayer. Never use high-pressure spray with bare feet or exposed skin, and always wear safety glasses.

⚠ CAUTIONS AND WARNINGS

All high-pressure systems require a primary pressure regulating device (e.g. regulator, unloader) and a secondary pressure relief device (e.g. pop-off valve, relief valve). Failure to install such relief devices could result in personal injury or damage to pump or property. Cat Pumps does not assume any liability or responsibility for the operation of a customer's high-pressure system.

Read all CAUTIONS and WARNINGS before commencing service or operation of any high-pressure system. The CAUTIONS and WARNINGS are included in each Service Manual and with each Accessory Data sheet. CAUTIONS and WARNINGS can also be viewed online at www.catpumps.com/dynamic-literature/cautions-and-warnings or can be requested directly from Cat Pumps.

WARRANTY

View the Limited Warranty online at www.catpumps.com/literature/cat-pumps-limited-warranty