



## High Pressure Shut-off Gun



**Gun Only Model**                    **39410**

**Gun with Lance Models**       **39411**  
**39412**

### FEATURES

- Unique valve design permits a gradual pull on the trigger for gradual build up of pressure.
- Contour design with fully adjustable front grip provides comfort and safety.
- Special safety-lock prevents unintentional operation.
- Stainless steel internal parts and forged inlet housing for durability.

**SELECTION:** Select a gun to match your system flow and pressure requirements, temperature and function being performed.

**INSTALLATION:** Install the appropriate regulating device when using a shut-off gun to avoid pressure spikes when the gun is shut off. Severe damage may occur to your system without this device.

### SPECIFICATIONS

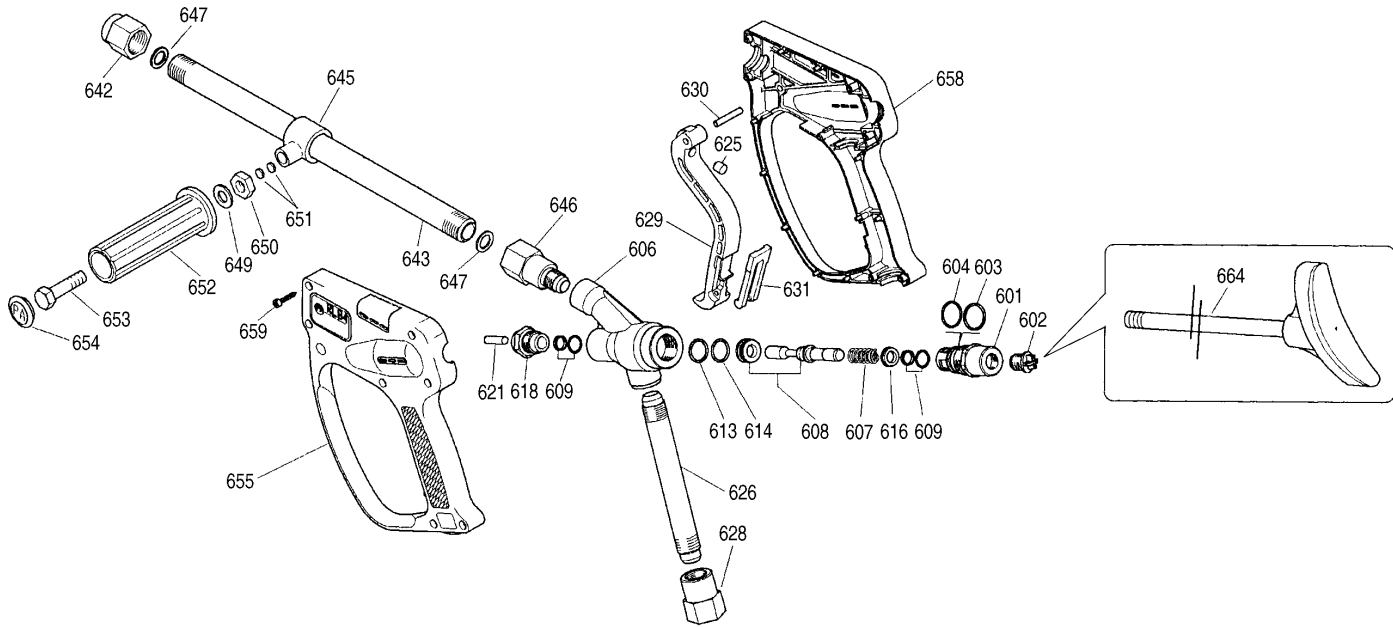
	U.S. Measure	Metric Measure
Maximum Flow .....	21 GPM	(79 L/M)
Maximum Pressure .....	7250 PSI	(500 BAR)
Maximum Temperature .....	212°F	(100°C)
Inlet Fitting .....	1/2" BSPF	(1/2" BSPF)
Outlet Fitting (Gun) .....	1/2" BSPF	(1/2" BSPF)
Outlet Fitting (Lance) .....	1/4" NPTF	(1/4" NPTF)
Weight (Gun) .....	3.2 lbs.	(1.45 kg)
Weight (with Lance)		
39411 .....	5.9 lbs.	(2.68 kg)
39412 .....	7.6 lbs.	(3.45 kg)
Dimensions (Gun) .....	8.62 x 8.50 x 1.50"	(219 x 216 x 38 mm)
Dimensions (with Lance)		
39411 .....	8.5" x 24.0"	(216 x 610 mm)
39412 .....	8.5" x 40.0"	(216 x 1010 mm)

Gun is stamped with a European safety pressure. Use only at above specifications to assure proper gun life and performance.

**OPERATION:** Flow through the gun occurs by squeezing the trigger on the gun. Because of the unique valve design, a gradual pull on the trigger will permit a gradual build-up of pressure up to 7250 PSI. Squeezing the trigger lifts the piston off the seat and allows flow through the flow ports around the perimeter of the seat.

*“Customer confidence is our greatest asset”*

## EXPLODED VIEW



## PARTS LIST

ITEM	P/N	MATL	DESCRIPTION	QTY	ITEM	P/N	MATL	DESCRIPTION	QTY
601	39405	BB	Plug, Spring	1	646	39423	S	Fitting, Discharge (1/2" BSPF)	1
602	—	NY	Plug, Rear	1	647	39003	CU	Gasket, Compression	2
603	—	PTFE	Back-up-Ring, Plug	1	649	—	STZP	Washer (M10)	1
604	—	NBR	O-Ring, Plug - 85D	1	650	—	STZP	Nut (M10)	1
606	—	BB	Body	1	651	32869	CU	Plug	2
607	39409	S	Spring, Piston	1	652	—	NY	Grip	1
608	39425	S	Seat, Piston 2pc Set	1	653	—	STZP	Screw (M10x35)	1
609	—	NBR	Seal, Piston w/O-Ring	2	654	—	NY	Plug, Grip	1
613	—	PTFE	Back-up-Ring, Seat	1	655	—	NY	Handle, Left Half	1
614	—	FPM	O-Ring, Seat	1	658	—	NY	Handle, Right Half	1
616	—	BB	Washer	1	659	—	S	Screw, Self Threading (M3.5x18)	7
618	39408	BB	Retainer, Piston	1	663	31069	—	Assy, Grip (Incls: 645, 649, 650, 651, 652, 653, 654)	1
621	39417	BB	Rod, Actuator	1	664	39414	—	Shoulder Support	1
625	—	S	Striker	1	665	39418	NY	Assy, Handle (Incls: 655, 658, 659)	1
626	39407	S	Pipe, Inlet	1	666	32437	S	Assy, Lance/Grip, 16" (400 mm)	1
628	39419	S	Fitting, Inlet (1/2" BSPF)	2				(Incls: 642, 643, 645, 647, 649, 650, 651, 652, 653, 654)	
629	—	NY	Trigger (Black)	1				32438 S Assy, Lance/Grip, 32" (800 mm)	1
630	—	BB	Pin, Trigger	1				(Incls: 642, 643, 645, 647, 649, 650, 651, 652, 653, 654)	
631	—	NY	Latch, Safety (Red)	1	667	31839	—	Assy, Trigger, Black (Incls: 625, 629, 630, 631)	1
642	32817	S	Holder, Nozzle (1/4")	1	668	31837	NBR*	Kit, Gun Repair	1
643	33947	S	Lance, 16" (400 mm) (39411)	1				(Incls: 603, 604, 607, 608, 609, 613, 614, 616, 621)	
	33948	S	Lance, 32" (800 mm) (39412)	1	669	31836	NBR*	Kit, O-Ring (Incls: 603, 604, 609, 613, 614)	1
645	—	STCP	Yoke	1					

*Italics are optional items. \*Review material codes for individual parts (FPM O-Ring is used). MATERIAL CODES (Not Part of Part Number): BB=Brass CU=Copper FPM=Fluorocarbon NBR=Medium Nitrile (Buna-N) NY=Nylon PTFE=Pure Polytetrafluoroethylene S=304SS STCP=Steel/Chrome Plated STZP=Steel/Zinc Plated*

## TROUBLESHOOTING

Liquid leaking from discharge of gun	<ul style="list-style-type: none"> <li>Foreign material lodged between piston and seat.</li> <li>Clean, examine parts for any damage and replace as needed.</li> <li>Piston or seat pitted or worn. Replace as needed.</li> </ul>
Liquid leaking from trigger area	<ul style="list-style-type: none"> <li>Examine O-ring and back-up-ring on seat and replace as needed.</li> <li>Examine O-ring and back-up-ring on piston and replace as needed.</li> <li>Examine washer for seat and replace as needed.</li> </ul>
Liquid leaking from rear of gun or plug, loss of pressure	<ul style="list-style-type: none"> <li>Examine O-ring and back-up-ring on piston and replace as needed.</li> <li>Check nozzle for foreign material lodged in nozzle or worn nozzle and replace as needed.</li> </ul>

**⚠ WARNING**  
Severe injury can occur with high pressure spray.  
Do not allow spray to contact any part of body.

**WARRANTY**  
**90 Day Warranty**  
Refer to complete CAT PUMPS Warranty for further information.

### World Headquarters CAT PUMPS

1681 - 94th Lane N.E. Minneapolis, MN 55449-4324  
Phone (763) 780-5440 — FAX (763) 780-2958  
e-mail: techsupport@catpumps.com  
www.catpumps.com

### International Inquiries FAX (763) 785-4329

e-mail: intlsales@catpumps.com



### CAT PUMPS (U.K.) LTD.

1 Fleet Business Park, Sandy Lane, Church Crookham  
FLEET, Hampshire, GU52 8BF, England  
Phone Fleet 44 1252-622031 — Fax 44 1252-626655  
e-mail: sales@catpumps.co.uk

### N.V. CAT PUMPS INTERNATIONAL S.A.

Heiveldkens 6A, B-2550 Kontich, Belgium  
Phone 32-3-450.71.50 — Fax 32-3-450.71.51  
e-mail: cpi@catpumps.be www.catpumps.be

### CAT PUMPS DEUTSCHLAND GmbH

Buchwiese 2, D-65510 Idstein, Germany  
Phone 49 6126-9303 0 — Fax 49 6126-9303 33  
e-mail: catpumps@t-online.de www.catpumps.de