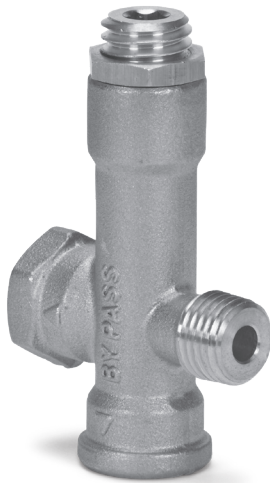


DATA SHEET

PRESSURE REGULATOR



Brass Model: 7561



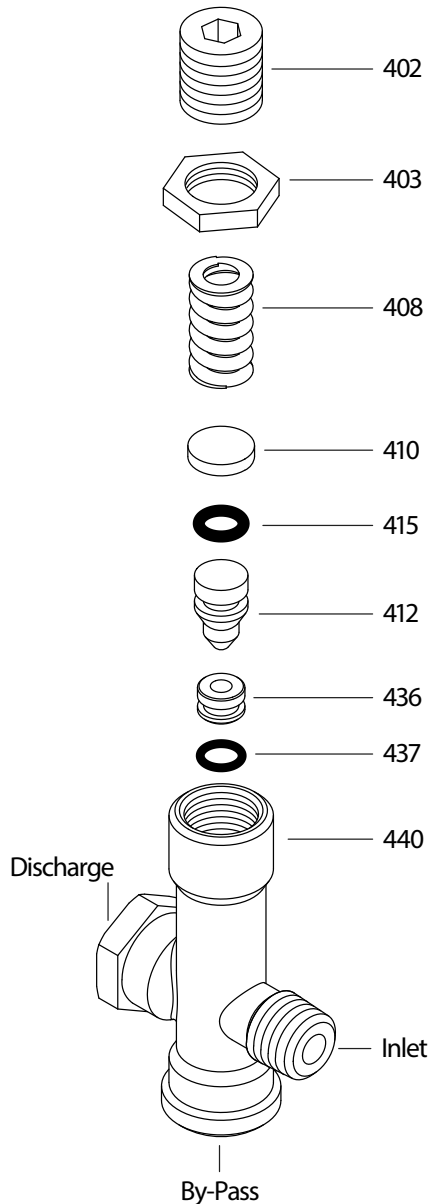
FEATURES

- Maintains full pressure while running in idle for quick return to system pressure.
- Compact size and easy installation.

SPECIFICATIONS

	U.S.	Metric
Flow Range	0 - 4.0 gpm	0 - 15.1 lpm
Pressure Range	100 - 1000 psi	6.9 - 69 bar
Max Temperature	194° F	90° C
Inlet Port	1/4" NPT(M)	1/4" NPT(M)
Outlet Port	1/4" NPT(F)	1/4" NPT(F)
By-Pass Port (Bottom)	1/4" NPT(F)	1/4" NPT(F)
Weight	4.0 oz.	0.11 kg
Dimensions	2.75 x 1.65 x 0.75"	69.8 x 42 x 19 mm

EXPLODED VIEW



PARTS LIST

ITEM	P/N	MATL	DESCRIPTION	QTY
402	49681	BB	Adjuster, Pressure	1
403	49682	BB	Nut, Locking	1
408	49876	STZP	Spring, Coil	1
410	549352	STCP R	Retainer, Spring	1
412	49877	S	Piston	1
415	14759	NBR	O-Ring, Piston Stem	1
436	49878	S	Seat	1
437	25300	NBR	O-Ring, Seat	1
440	—	BB	Body	1
468	76860	NBR	Kit, Repair (Incls: 412,415,436,437)	1

Italics are optional items.

MATERIAL CODES (Not Part of Part Number):
 R Components comply with RoHS Directive
 BB = Brass NBR = Medium Nitrile (Buna-N) S = 304SS
 STCP = Steel/Chrome-plated STZP = Steel/Zinc Plated

⚠ CAUTIONS AND WARNINGS

All High Pressure Systems require a primary pressure regulating device (i.e. regulator, unloader) and a secondary pressure relief device (i.e. pop-off valve, relief valve). Failure to install such relief devices could result in personal injury or damage to pump or property. Cat Pumps does not assume any liability or responsibility for the operation of a customer's high pressure system.

Read all CAUTIONS and WARNINGS before commencing service or operation of any high pressure system. The CAUTIONS and WARNINGS are included in each service manual and with each Accessory Data sheet. CAUTIONS and WARNINGS can also be viewed online at www.catpumps.com/cautions-warnings or can be requested directly from Cat Pumps.

WARRANTY

View the Limited Warranty on-line at www.catpumps.com/warranty.



CAT PUMPS

1681 - 94TH LANE N.E. MINNEAPOLIS, MN 55449-4324
 PHONE (763) 780-5440 — FAX (763) 780-2958
 e-mail: techsupport@catpumps.com
www.catpumps.com