

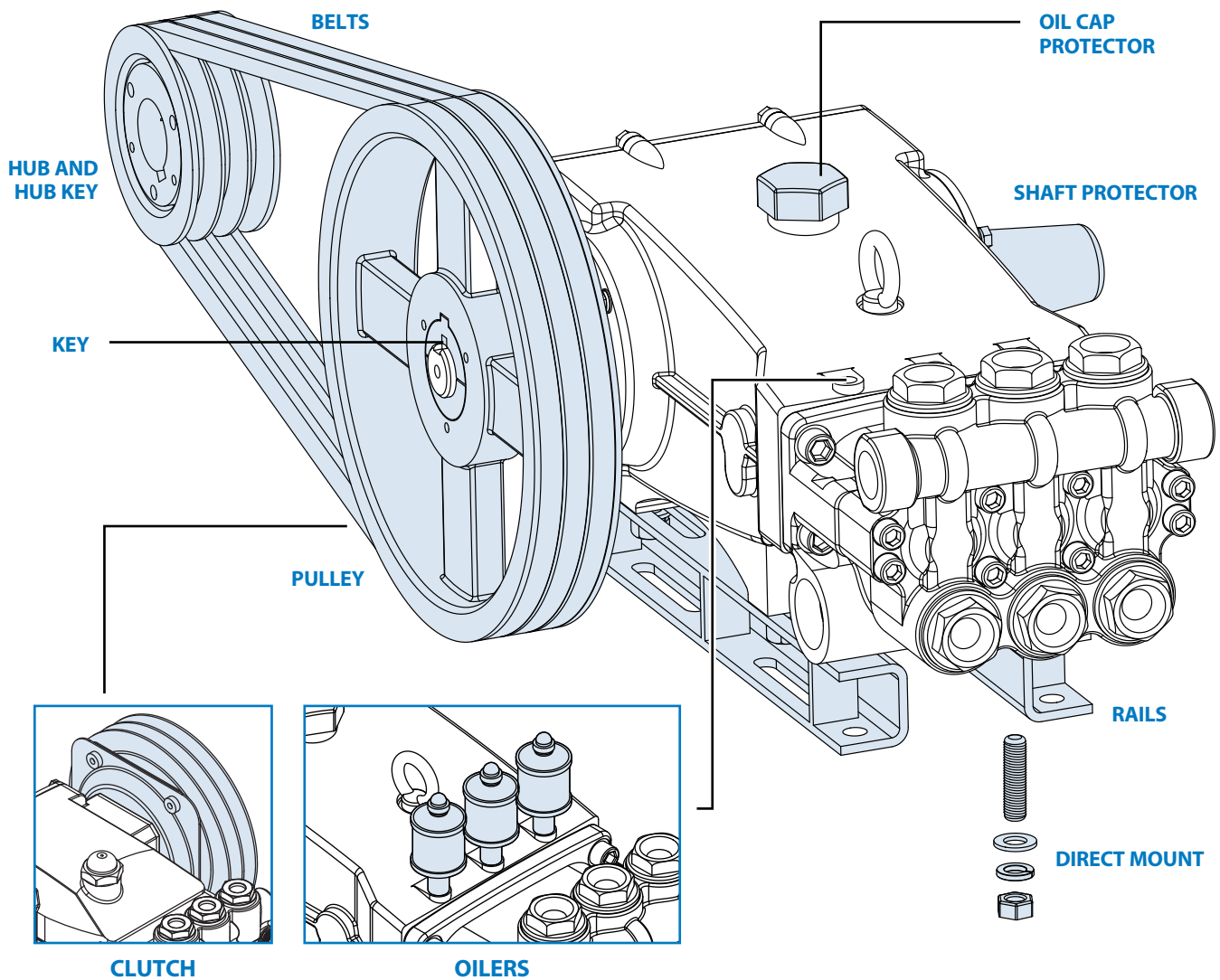
# ACCESSORIES

## Belt Drive



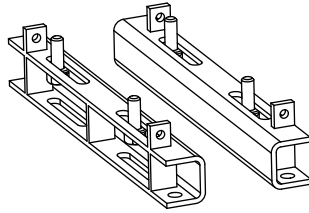
Cat Pumps offers a wide range of quality accessories. Adhering to the same exacting standards as our pumps, all accessories are performance-tested and designed to match each pump's unique specifications. By demanding Cat Pumps products, you receive the best value and lowest life-cost over the life of the system.

To ensure the very best system life-cycle, Cat Pumps offers rail and direct mount assemblies, complete mounting assemblies, clutches, keys, belts, hubs and hubs/key assemblies, pulleys and pulley/hub/key assemblies, lubricants/oilers and shaft/oil cap protectors to meet your belt drive installation needs. Whatever the need, Cat Pumps has a selection of proven drive accessories to compliment your pump investment.



Be the best-in class and realize low life cycle costs —  
**Choose pumps and accessories from Cat Pumps!**

## Rail, Direct Mount and Complete Mounting Assemblies



Mount pump onto a secure, horizontal base with either rail assemblies or direct mount assemblies.

- Rail assembly, direct mount assembly or complete mounting assembly not included with pump unless otherwise noted.
- Use direct mount assembly when mounting block or flat base is used or pulley hangs over base edge.

PART NUMBER	PUMP MODELS
-------------	-------------

### RAIL ASSEMBLIES - STEEL/ZINC PLATED

126604	6020, 6040, 6747, 6760 - 6777, 6801/K, 6811/K, 6821/K, 6831/K, 6841/K, 6861/K <b>Included with pump</b>
30611	333, 430, 323, 390, 310 - 350S, 311 - 357, 530, 550, 781/K, 31, 45, 53-70, 5CP2120W-2150W, 5CP3120/3120CSS, 5CP5120-5140CSS, 5CP6120-6190, 5CP6221-6251
30612	280, 290, 230-277, 3CP1120-1140, 3CP1221-1241
30613	623-1010, 650-661D, 1050-1057, 1530/31, 1540E/41, 1560, 1861/K, 1810/K, 7CP6110-6171
30614	2520/2520C, 2510/11, 2530-2537, 2831/K
30637	5CP2120W-2150W, 5CP3120/3120CSS, 5CP5120-5140CSS, 5CP6120-6190, 5CP6221-6251
30645	530, 550, 45, 53-70, 781/K
92674	3501/C, 3507/C, 3511/C, 3517/C, 3520/C, 3521/C, 3527, 3531/C, 3535/C, 3537, 3541/C, 3545, 3560, 3801/K, 3811/K, 3821K, 3831/K, 3841/K
990550	650-661D, 1050-1057 <b>For Diesel or Gas mounts</b>

### DIRECT MOUNT ASSEMBLIES - STEEL/ZINC PLATED

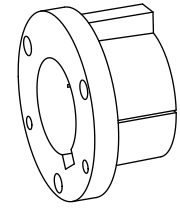
30243	333, 430, 323, 390, 310-350S, 311-357, 530, 550, 781/K, 30-35, 45, 51-70, 5CP2120W-2150W, 5CP3120/3120CSS, 5CP5120-5140CSS, 5CP6120-6190, 5CP6221-6251
30264	623-1010, 650-661D, 1050-1057, 1530/31, 1540E/41, 1560, 1861/K, 1810/K, 7CP6110-6171
34018	3520/C, 3535, 3545, 3560
34039*	3501/C, 3507/C, 3511/C, 3517/C, 3521/C, 3527, 3531/C, 3537, 3541/C, 3801/K, 3811/K, 3821/K, 3831/K, 3841/K

Note: \* 304 stainless steel

### MOUNTING ASSEMBLIES - INCLUDES: RAILS, KEY, PULLEY/HUB AND SHAFT PROTECTOR

30641	3CP1120-1140, 3CP1221-1241
30651	280, 290, 230-277
30652	333, 430
30653	623-1010
30659	323, 390, 310-350S, 311-357, 5CP2120W-5CP2150W, 5CP3120/CSS, 5CP5120-5CP5140CSS, 5CP6120-5CP6190, 5CP6221-6251
30660	530, 550, 781/K, 53-70
30661	650-661D, 1050-1057, 1530/31, 1540E/41, 1560, 1861/K, 1810/K

## Hubs and Hub/Key Assembly



Metric sized hubs to match metric shaft diameter of pump.

- Contact Cat Pumps for available hubs for motor shafts.
- Metric sized hub with matching metric key for pump shaft only.

PUMP SHAFT DIAMETER (MM)	TYPE	PART NUMBER	PUMP MODELS
--------------------------	------	-------------	-------------

### HUB - STEEL

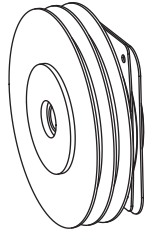
16.5	H	30943 *	230-277, 280, 290, 333, 430, 3CP1120-140, 3CP1221-1241
20	H	30945 *	310-350S, 323, 390, 311-357, 45, 5CP2120W-2150W, 5CP3120/3120CSS, 5CP5120-5140CSS, 5CP6120-6190, 5CP6221-6251
24	B	997866	
24	B	998755	
24	H	33000 *	530, 550, 781/K, 51-70, 7CP6110-7CP6171
24	P1	990596	
24	Q1	997857	
25	H	30234	621, 623, 820, 821, 1010, 1011
30	B	990012 *	
30	H	30059 *	
30	P1	990034	650-661D, 1050-1057, 1530/31, 1540E/41, 1560, 1861/K, 1810/K, 2510/11, 2530-2537, 2831/K
30	Q1	991711 *	
30	SK	999045	
35	B	990013 *	
35	E	998708	3501/C, 3507/C, 3511/C, 3517/C, 3520/C, 3521/C, 3527, 3531/C, 3535/C, 3537, 3541/C, 3545, 3560, 3801/K, 3811/K, 3821/K, 3831/K, 3841/K
35	P1	990032	
35	Q1	991788	
35	SK	990076	
45	B	990014 *	
45	E	990065 *	6020, 6040, 6747, 6760-6777, 6801/K, 6811/K, 6821/K, 6831/K, 6841/K, 6861/K
45	J	990064	
100	M	990068	152R060/C, 152R080/C, 152R100/C, 157R060, 157R080

Note: \*Add "Z" to part number for zinc plated hub

### HUB AND KEY ASSEMBLY - STEEL

16.5	H	30942	280, 290, 333, 430, 3CP1120-1140, 3CP1221-1241, 230-277
20	H	30944	323, 390, 310-350S, 311-357, 45, 5CP2120W-2150W, 5CP3120/3120CSS, 5CP5120-5140CSS, 5CP6120-6190, 5CP6221-6251
25	H	30284	621, 623, 820, 821, 1010, 1011
30	H	30209	2510/11, 2520/C, 2530-2537, 2831/K

## Clutches



Reduces amount of time pump is running, saving energy and increasing pump life.

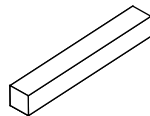
- Broad range of clutches up to 100 ft-lbs torque for high performance.

MODELS	CLUTCH DIAMETER/ NUMBER OF GROOVES	BELT TYPE	PUMP MODELS
34960	7" / 1	A	3CP1120-1140, 3CP1221-1241
34961	7" / 1	A	280, 290, 333, 430, 230-277
34962	7" / 1	A	323, 390, 310-350S, 311-357, 45
34963	7" / 2	A	323, 390, 310-350S, 311-357, 45
34964	7" / 2	A	280, 290, 333, 430, 230-277
34965	7" / 2	A	3CP1120-1140, 3CP1221-1241
34970	7" / 1	A	
34980	7" / 2	A	5CP2120W-2150W, 3120/3120CSS, 5120-5140CSS, 6120-6190, 6221-6251
34299	7.3" / 8	Poly-V, L-Style	
34959	7.3" / 8	Poly-V, L-Style	53-70, 530, 550, 781/K
34971	7.3" / 8	Poly-V, L-Style	7CP6110-7CP6171
34628	12.4" / 1	B	53-70, 530, 550, 781/K
34630	12.4" / 2	B	53-70, 530, 550, 781/K
34563	12.4" / 2	B	650-661D, 1050-1057, 1530/31, 1540E/41, 1560, 1861/K, 1810/K

## Keys

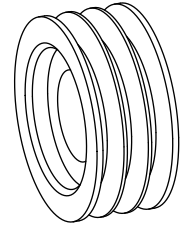
Provides alignment and secures pump shaft to motor shaft to prevent turning.

- Keys not supplied with pump.



PART NUMBER	SIZE (MM) UNLESS AS NOTED	PUMP MODELS
30047	5 x 5 x 24	280, 290, 333, 430, 230-277, 3CP1120-1140, 1221-1241
30057	6 x 6 x 25 (round end)	323, 390, 45, 310-350S, 311-357, 5CP2120W-2150W, 5CP3120/3120CSS, 5CP5120-5140CSS, 5CP6120-6190, 5CP6221-6251 and Clutch models: 34962/63, 34970/80
30067	8 x 7.25 x 25	51-70, 530, 550, 781/K, 650-661D, 1050-1057, 1530/31, 1540E/41, 1810/K, 1861/K, 7CP6110-7CP6171
30089	5 x 5 x 36.5	Clutch models: 34960/961, 34964/965
34021	10 x 8 x 70	3501/C, 3507/C, 3511/C, 3517/C, 3520/C, 3521/C, 3527, 3531/C, 3535/C, 3537, 3541/C, 3545, 3560, 3801-3841K
35034	6 x 8 x 26 Step	Clutch model: 34299
43048	14 x 9 x 90	6020, 6040, 6747, 6760-6777, 6801-6861K
50146	7 x 7 x 40	621, 623, 820, 821, 1010, 1011
890601	28 x 170 Step	152R060/C, 152R080/C, 152R100/C, 157R060, 157R080
890602	28 x 16 x 170	152R060/C, 152R080/C, 152R100/C, 157R060, 157R080
990036	8 x 7 x 40	2520/C, 1530/31, 1540E/41, 1560, 2510/11, 2530-2537, 2831/K
990069	8 x 6.35 x 40	Clutch model: 34563
991036	8 x 7 x 36	Clutch model: 34628

## Pulleys and Pulley/Hub w/Key



A combination one piece pulley and hub construction for pump shaft installation.

- Contact Cat Pumps for available pulley sizes for either pump or motor side.

PUMP SHAFT DIAMETER (MM)	PART NUMBER	PULLEY DIAMETER NO. OF GROOVES	BELT TYPE	PUMP MODELS
--------------------------	-------------	--------------------------------	-----------	-------------

### PULLEY/HUB COMBINATION WITH TWO SET SCREWS - STEEL/ZINC PLATED

16.5	30032	5" / 1	A	230-277, 280, 290, 333, 430, 3CP1120-1140, 3CP1221-1241
16.5	30048	8" / 1	A/B	230-277, 280, 290, 333, 430, 3CP1120-1140, 3CP1221-1241
20	30058	8" / 1	A/B	323, 390, 310-350S, 311-357, 30, 31, 45, 5CP2120W-2150W, 5CP3120/3120CSS, 5CP5120-5140CSS, 5CP6120-6190, 5CP6221-6251

### PULLEY/HUB COMBINATION WITH TWO SET SCREWS AND KEY ASSEMBLY - STEEL

16.5	30244	8" / 1	A/B	280, 290, 333, 430, 230-277, 3CP1120-1140, 3CP1221-1241
16.5	30246	5" / 1	A	280, 290, 333, 430, 230-277, 3CP1120-1140, 3CP1221-1241
20	30633	8" / 1	A/B	323, 390, 310-350S, 311-357, 30, 31, 45, 5CP2120W-2150W, 5CP3120/3120CSS, 5CP5120-5140CSS, 5CP6120-6190, 5CP6221-6251

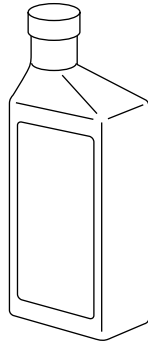
### PULLEY ONLY - CAST IRON

HUB SIZE	PART NUMBER	PULLEY DIAMETER NO. OF GROOVES	BELT TYPE	PUMP MODELS
H	30206	10" / 2	A/B	530, 550, 623-1010, 781/K, 650-661D, 1050-1057, 1530/31, 1540E/41, 1560, 1861/K, 1810/K, 2510/11, 2530-2537, 2831/K

## Belts

Contact Cat Pumps about our belt selection: AX, BX, SPB, 3VX, 5VX and Gearbelts.

## Lubricants/Oilers



Crankcase oil, anti-seize and sealant products to ensure proper operation and lubrication of pump.

- Custom blend, premium grade, petroleum-based hydraulic oil for all Cat Pumps.
- Anti-seize products to prevent galling, seizing, friction and wear.
- Sealant products to extend pump seal and o-rings life.

PART NUMBER	CAPACITY	PUMP MODELS
-------------	----------	-------------

### OIL

6100	Case - 12-21ounce bottles	All piston and plunger pumps
6105	Twin pack - 2 x 2.5 gallons	All piston and plunger pumps
6107	Bottle - 21 ounces	All piston and plunger pumps
6109	Drum - 30 gallons	All piston and plunger pumps
6115	Pail - 5 gallons	152R060/C, 152R080/C, 152R100/C, 157R060/080
6116	Drum - 16 gallons	152R060/C, 152R080/C, 152R100/C, 157R060/080

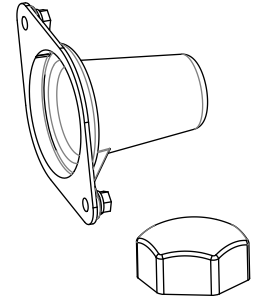
### ANTI-SEIZE AND SEALANTS

6106	2 milliliters	Anti-seize for pump shafts and keys - all piston and plunger pumps
6119	2 ounces	Anti-seize for threads - all stainless steel piston and plunger pumps
6124	3 ounces	Liquid gasket for o-rings, seals - all piston and plunger pumps
701931	3 ounces	Silicone sealant for rear and bearing covers, crankcase to manifold - 1540E, 2530E

### OILERS GRAVITY FEED WITH 1/4" NPTM THREADS

30278	1 ounce	2520/C, 2510/11, 2530-2537, <b>Except</b> 2831/K, 35/38 Series, <b>Except</b> 3541/C, 3545, 3841/K
30429	10 ounces	6020, 6040, 6760-6777, <b>Except</b> 6747 6861/K, <b>Except</b> 6801/K-6841/K

## Protectors – Shaft and Oil Cap



Safety devices to eliminate exposure to rotating pump shaft and to minimize water leakage into pump.

- Shaft protector not included with pump unless otherwise noted.
- Oil cap protector not included with pump except 35/38 series pumps.

PART NUMBER	MATERIAL	PUMP MODELS
-------------	----------	-------------

### SHAFT PROTECTORS

25130	STCP	230-277, 280, 290, 333, 430
26516	STCP	2520/C, 2510/11, 2530-2537, 2831/K
29445	AL	6020, 6040, 6747, 6760-6777, 6801/K, 6811/K, 6821/K, 6831/K, 6841/K, 6861/K <b>Included with pump.</b>
30764	NY*	650, 660, 1050, 1530, 1540E, 1560
30764S	NY	661C, 661D, 1051, 1051C, 1051D, 1057, 1531, 1541, 1861/K, 1810/K
43139	STCP	621, 623, 820, 821, 1010, 1011
43256	STCP	530, 550
44516	NY	3501/C, 3507/C, 3511/C, 3517/C, 3520/C, 3521/C, 3527, 3531/C, 3535/C, 3537, 3541/C, 3545, 3560, 3801/K, 3811/K, 3821/K, 3831/K, 3841/K <b>Included with pump.</b>
118672	STCP	310-350S, 311-357, 3CP1120-1140, 3CP1221-1241, 5CP2120W/2150W, 5CP3120, 5CP6120-6190, 5CP6221/6251
120220	STCP	7CP6110, 7CP6111, 7CP6170, 7CP6171

\* Nylon protectors w/ two stainless screws.

### OIL CAP PROTECTORS

Oil fill cap protector for prevention of water entering into crankcase. Not included with pump except on 35 and 38 series pumps.

828710	PE	All piston and plunger pumps <b>except</b> the 1CX, 2DX, 2SF, 2SFX, 3CP, 3DNX, 3DX, 3SPX, 4SF, 5CP, 66DX, 67DX and 7CP series pumps.
--------	----	--

Material codes: AL = Aluminum, NY = Nylon, PE = Polyethylene, STCP = Steel/Chrome Plated

## Total Life Cycle Cost:

More and more users of pumping systems are making purchase decisions based on a systems Total Life Cycle Cost and not based on the systems initial cost. Pump, installation, energy use, downtime, operating expense and maintenance are all factors considered to determine a systems overall life cycle cost. The objective of life cycle costing is to evaluate and optimize product life costs yet satisfying the performance, safety, reliability, and maintainability of the system.

Cat Pumps is keenly aware of minimizing life cycle costs in both its pump and accessory component designs. A pumping systems ongoing performance is as good as its weakest component, that's why we rigorously test and evaluate our accessory components. Our mission is to provide the best system value by providing pumps and accessories that exceed your performance and reliability expectations so you can realize the lowest possible life cycle cost.



### CAT PUMPS

1681 - 94TH LANE N.E. MINNEAPOLIS, MN 55449-4324  
 PHONE (763) 780-5440 — FAX (763) 780-2958  
 e-mail: techsupport@catpumps.com  
 www.catpumps.com