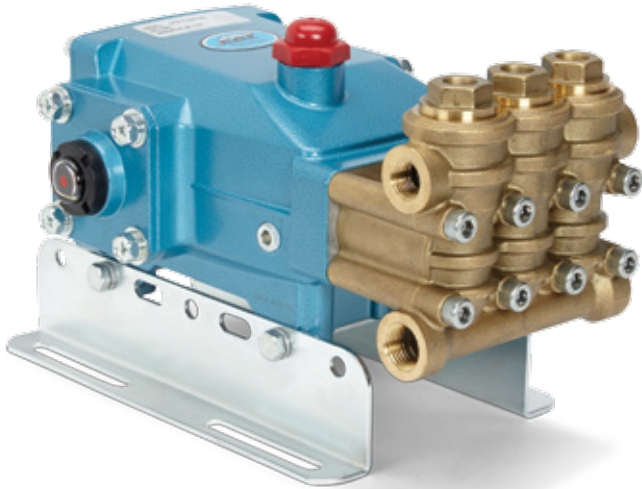


MODEL 5CP4120CSS PLUNGER PUMP



4.5 GPM – 4,000 PSI

Designed for the most demanding pressure wash applications

Cat Pumps 5CP series plunger pumps have set the industry standard for long lasting pressure washer pumps. Working with customers and equipment manufacturers on new application demands, the model 5CP4120CSS has expanded the 5CP series to include pressures to 4,000 psi, all while maintaining the life you can expect from Cat Pumps.

When quality counts, Cat Pumps is the #1 choice for pressure washing applications. Don't fall into the price trap by choosing a less expensive pump upfront that will end up costing more in the long run. Get more work done without the hassles and downtime – choose Cat Pumps.

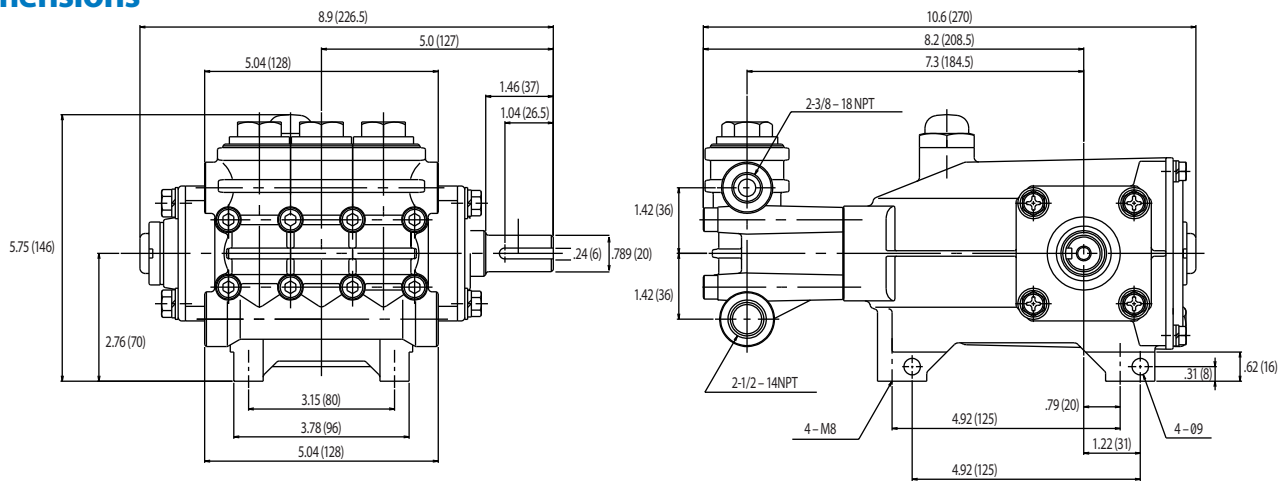
Features

- High and low pressure seals are completely lubricated and cooled, greatly increasing pump life
- Side and rear oil gauge for easy maintenance
- Flexible Drive options
 - Electric Motor
 - Belt with standard pulley or clutch
 - Direct Drive with Bell housing and flex coupler
 - Gas or Diesel Engine
 - Belt with standard pulley or clutch
 - Gearbox for 1" engine shaft

Specifications

	US Measure	Metric Measure
Flow	4.5 gpm	17.0 lpm
Pressure	4000 psi	275 bar
RPM	1750	1750
Inlet Pressure Range	-2.5 – 60 psi	-.2 – 4 bar
Max Liquid Temperature	160°F	71°C
Inlet Ports (2)	1/2" NPTF	1/2" NPTF
Discharge Ports (2)	3/8" NPTF	3/8" NPTF
Weight	19.9 lbs	9.0 kg
Dimensions	10.6 x 8.9 x 5.7"	270 x 226.5 x 146 mm

Dimensions



Popular Accessories



Unloader
PN 7694
2.5 – 10.5 GPM
400 – 4050 PSI



Pop-Off Valve
PN 33962
1 – 6 GPM
1000 – 4000 PSI



Pressure Gauge
PN 6089
0 – 6,000 PSI



Inlet Strainer
PN 7104.4
1/2" NPTF
10 GPM Max



Oil
PN 6107
21 oz. Bottle
Specially Formulated for
Extended Protection

Contact Cat Pumps for pricing or more information at techsupport@catpumps.com or 763-780-5440



CAT PUMPS
1681 - 94TH LANE N.E. MINNEAPOLIS, MN 55449-4324
PHONE (763) 780-5440 — FAX (763) 780-2958
e-mail: techsupport@catpumps.com
www.catpumps.com