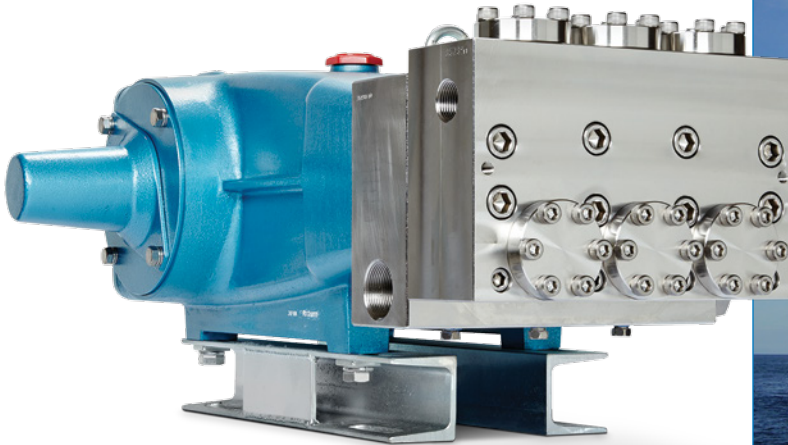


# MODEL 6835 PLUNGER PUMP



40 GPM – 3,000 PSI

## Engineered for Demanding Application Requirements

The Cat Pumps model 6835 expands the 68 frame block-style plunger pump to new heights with a flow rate of 40 gpm/151 lpm and pressure rating to 3,000 psi/207 bar. Based on the field-proven 6831 design, the 6835 is everything you expect from Cat Pumps: engineered to the last detail to provide exceptional life in the most demanding applications.

Primarily designed for high-pressure water systems, the 6835 pump features pre-set low pressure seals to provide secondary protection against external leaks—and do not require packing adjustment. Special high-density, polished concentric ceramic plungers provide a true wear surface, resulting in extended seal life and hours of trouble free operation. The 6835 joins a long list of Cat Pumps products recognized for durability, reliability and dependable performance.

### Features:

- Excellent continuous duty performance due to durable dual V-packings that are lubricated and cooled by pumped liquid
- Pump “wet-end” is easily serviced without entering crankcase, reducing field service time and effort
- Internal 6-piece packing assembly includes bronze adapters, PPS spacers and PTFE blend V-packings.

### Typical Applications:

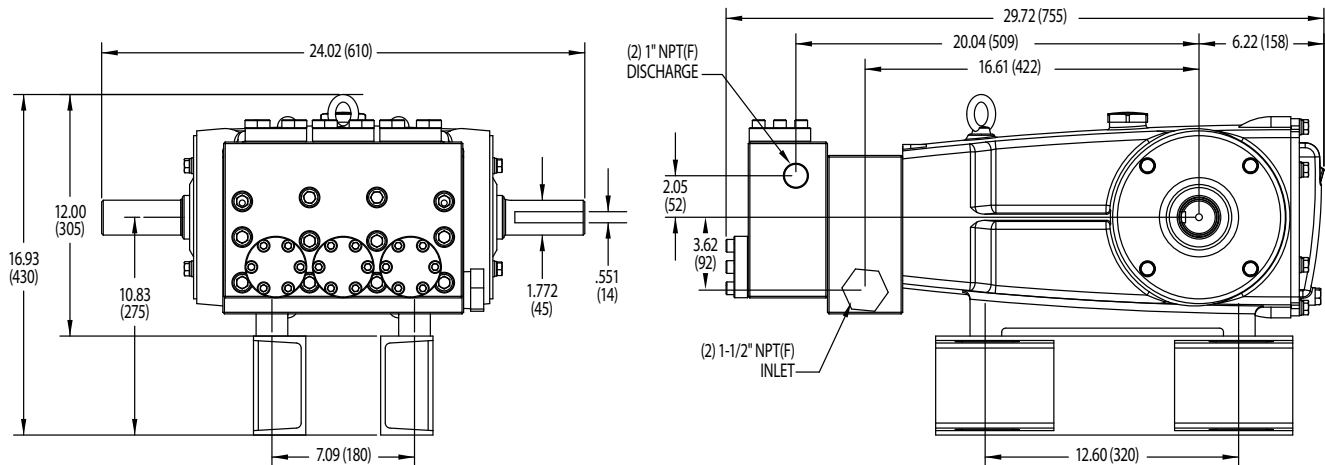
- High-Flow/Pressure Flushing
- High-Pressure Washdown
- Water Jetting
- High-Pressure Injection
- Blowout Preventer (BOP) Charging

## Specifications

	US Measure	Metric Measure
<b>Flow</b>	40 gpm	151 lpm
<b>Pressure Range</b>	100 - 3000 psi	6.9 - 207 bar
<b>Pump RPM*</b>	625 rpm	625 rpm
<b>Inlet Pressure Range</b>	Flooded to 50 psi	Flooded to 3.5 bar
<b>Max Liquid Temperature</b>	140°F	60°C
<b>Inlet Ports (2)</b>	1-1/2" NPT(F)	1-1/2" NPT(F)
<b>Discharge Ports (2)</b>	1" NPT(F)	1" NPT(F)
<b>Shaft Diameter</b>	1.772"	45 mm
<b>Weight</b>	355 lbs	161 kg
<b>Dimensions</b>	29.72 x 24.02 x 12.00"	755 x 610 x 305 mm

\*Pump minimum is 100 RPM

## Dimensions



## Popular Accessories



### Pressure Regulator

PN 7033  
3.5 – 35 GPM  
1,500 – 3,000 PSI



### Relief Valve

PN 890711  
0 – 50 GPM  
1,000 – 6,000 PSI



### Pressure Gauge

PN 6089  
0 – 6,000 PSI



### Pulsation Dampener

PN 6010  
40 GPM  
3,000 PSI



### Oil

PN 6107  
21 oz. Bottle  
Specially Formulated for  
Cat Pumps

Contact Cat Pumps for more information at [techsupport@catpumps.com](mailto:techsupport@catpumps.com) or 763-780-5440



### CAT PUMPS

1681 - 94TH LANE N.E. MINNEAPOLIS, MN 55449-4324  
PHONE (763) 780-5440 — FAX (763) 780-2958  
e-mail: [techsupport@catpumps.com](mailto:techsupport@catpumps.com)  
[www.catpumps.com](http://www.catpumps.com)