



# Vehicle Cleaning Products

Longest Lasting and Most Reliable Pumps and Accessories



Product Quality, Reliability and Support You Expect

[www.catpumps.com](http://www.catpumps.com)

# Outruns, Outlasts and Outperforms the Competition.

## Maximize Uptime with Cat Pumps

Car Wash professionals depend on their equipment to be up and running so they can take care of their customers and maximize their return on investment. This is why market leaders continue to trust Cat Pumps to keep them open for business. Buying a cheaper pump may seem like a way to save a few dollars, but cutting corners by reducing quality proves more costly in the long run.

For over 50 years, Cat Pumps has provided high-quality pumps and systems that are valued for long life and ease-of-maintenance. The lowest cost-of-ownership and industry-leading reliability are two reasons why Cat Pumps is the #1 pump in Car Washes worldwide — a market position reinforced with every product shipped and installed.

## Cat Pumps Benefits

### Technical Support

Cat Pumps expertise is there to help when needed. Customers can talk directly to knowledgeable technicians, and the website is available 24/7 for informational videos, comprehensive data sheets, service manuals and FAQs.

### Availability

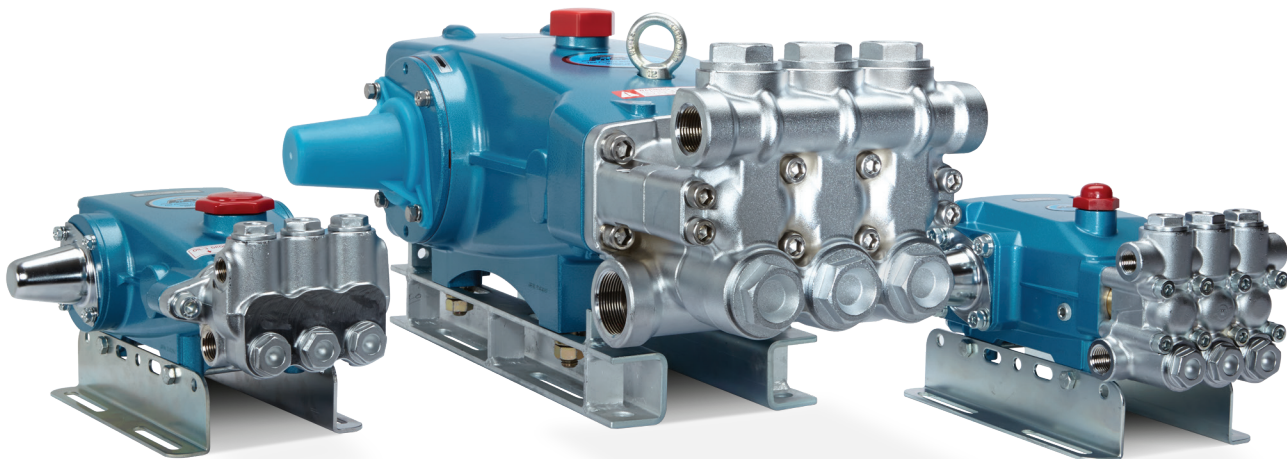
Cat Pumps backs its quality products with unparalleled delivery and service. Parts and pumps are on the shelf for 24-hour shipping. A comprehensive, highly-trained distributor network provides expert sales, field service and support at the level you expect from a world product leader.

### Easy and Minimal Maintenance

Our superior design, including our proprietary seal and valve kits, makes maintenance easy. Customers in every market tell us how seldom they need to service Cat Pumps equipment.

### Cat Pumps Advantage

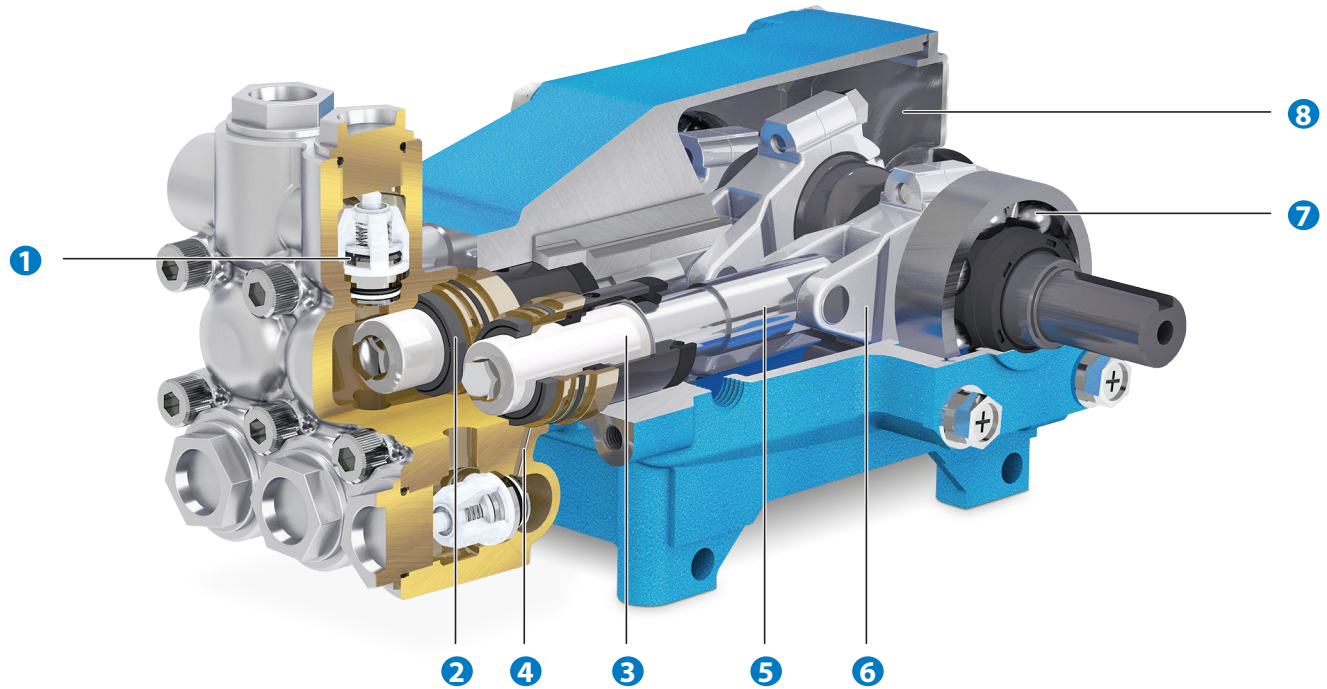
- Higher productivity and less downtime
- Fewer repairs and less maintenance costs
- Greater confidence in equipment performance
- Service parts and pumps stocked for 24-hour shipping
- Excellent customer and technical support



*The most popular car wash pumps in North America. Cat Pumps is #1 for a reason: dependability you can count on.*

# Built for Dependable Performance

Quality is evident in every detail of Cat Pumps products — built to be the longest-lasting and most dependable available.



- 1 Stainless steel valves, seats and springs provide corrosion-resistance, positive seating and long life.
- 2 Specially formulated, Cat Pumps exclusive high-pressure seals offer unmatched performance and seal life.
- 3 Precision-polished, solid ceramic plungers provide maximum resistance to corrosion and abrasion, extending seal life.
- 4 100% wet seal design adds to service life by allowing pumped fluids to cool and lubricate the elastomers on both sides.
- 5 The high-strength stainless steel plunger rods have a 360° supported crosshead providing uncompromising plunger rod alignment.
- 6 Matched oversized connecting rods are made of high-strength material with exceptional bearing quality.
- 7 Oversized ball bearings or tapered roller bearings provide extended bearing life.
- 8 High-strength, lightweight die cast aluminum crankcase with splash oil design allows operation at speeds as low as 100 rpm.

## Applications

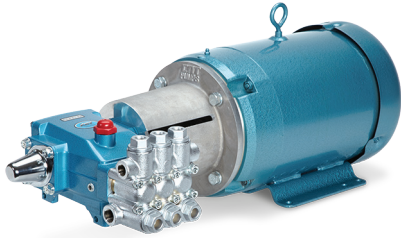
- Self-Serve
- Automatic
- Prep Unit
- Detailing
- Rocker Panel Blasting
- Under Carriage Wash
- Truck Wash
- Heavy Equipment Wash
- High Pressure Rinse
- High Pressure Wash
- Wheel Blasting



# Plunger Pumps

## Plunger Pumps, Direct Drive, Bell Housing

Bell housing and flex coupler offer direct drive option for select models



Direct Drive Model 5CP6190BH73

Pump Model	Maximum Flow		Maximum Pressure		Pump rpm
	gpm	lpm	psi	bar	
340, 340B	4	15	1800	124	1725
5CP2140WCS, 5CP2140BCS	4	15	2500	172	1725
350, 350B	5	19	1500	103	1725
5CP2150W, 5CP2150B	5	19	2000	138	1725
5CP6120	7.4	28	1200	83	1725
56	8	30	2500	172	1760
5CP6180CSS	8.2	31	1500	103	1750
5CP6190	10	38	1200	83	1750
7CP6110CS	10.5	40	2000	138	1750

\* Brake Horse Power (BHP) = gpm x psi / 1460

## Direct-Drive Mounting Components



Bell Housings and Flexible Couplings

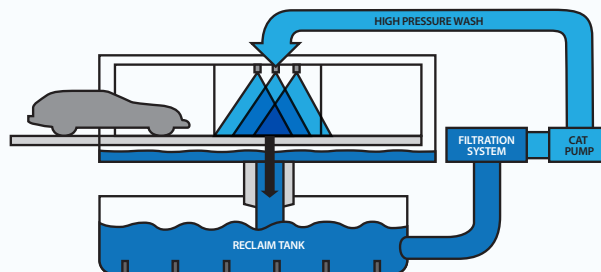
Pump Model	Motor Frame	Bell Housing Assembly	Flex Coupling Assembly
340, 340B, 350, 350B	56C-145TC	76056.5FR	8260
	182/184TC	76184.5FR	8230
	213/215TC	76215.5FR	8275
5CP Series	56C-145TC	76056.5CP	8261
	143/145TC	76056.5CP	8260
	182/184TC	76184.5CP	8230
	213/215TC	76215.5CP	8275
	254/256TC	76256.5CP	8217
56	182/184TC	76184.7FR	8370
	213/215TC	76215.7FR	8375
	254/256TC	76256.7FR	8380
7CP6110CS	182/184TC	76184.7CP	8370
	213/215TC	76215.7CP	8375
	254/256TC	76256.7CP	8380

Note: Contact Cat Pumps for complete motorized pump units (pump, motor, bell housing and flexible coupling)

## Proven Dependability with Reclaim Water

For decades, thousands of Cat Pumps systems have been reliably used with reclaim systems, pumping fluids with particle sizes to 50 micron. Car wash reclaim systems typically operate in the 5 – 50 micron range, with the majority running 5 – 25 micron range. The water quality and type of particulate does have a direct effect on pump life. As particle size increases, there is a potential decrease in pump life. Consequently, we recommend the following specifications to maintain performance and achieve maximum pump life:

- Particle size - not to exceed 50 micron
- TSS - not to exceed 50 ppm
- pH - maintained between 5 and 9
- Sediment pits cleaned regularly
- Reclaim filtration system must be operated and maintained according to requirements provided by manufacturer



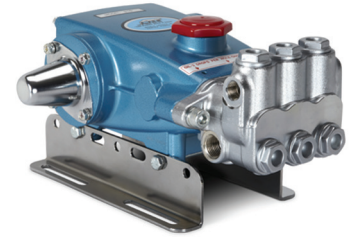
# Plunger & Piston Pumps

## Plunger Pumps, Belt Drive

Belt drive pumps offer the flexibility to size pulleys to create a precise rpm for the desired flow.

Pump Model	Maximum Flow		Maximum Pressure		Pump rpm
	gpm	lpm	psi	bar	
310, 310B, 310BQ	4	15	2200	152	950
5CP2120W, 5CP2120B	4	15	2500	172	950
	5	19	2000	138	1188
530	5	19	2500	172	1100
5CP6190	8	30	1450	100	1450
5CP6180CSS	8.2	31	1500	103	1750
1050	10	38	2200	152	958
7CP6170	11	41.6	2000	138	1450
1050	12	45.4	1800	124	1150
1530	15.6	59	1500	103	1450
1540E	18	68	1200	83	1100
2510	20	76.0	2000	138	1450
2530	25	95.0	1200	83	1025
3535	36	136	1200	83	800
3545	45	170	1000	69	765
6760	60	227	1200	83	520

\* Brake Horse Power (BHP) = gpm x psi / 1460



Model 310

## Piston Pumps, Belt Drive

Piston Pumps offer a unique "Uniflow Design" which is capable of up to 19 feet of suction head.

Pump Model	Maximum Flow		Maximum Pressure		Pump rpm
	gpm	lpm	psi	bar	
430	5	19	1000	69	1040
623	6	23	1200	83	850
820	10	38	1000	69	940
390	12	45.4	600	41.4	1200
1010	13	49	700	48	900
6040	40	151	1500	103	500
6020	60	227	1000	69	500

\* Brake Horse Power (BHP) = gpm x psi / 1460



Model 820

## "B" Series Washout Resistant Manifolds

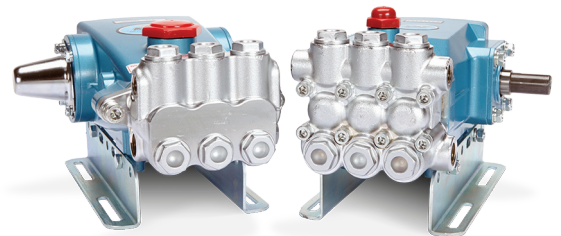
The "B" Series was developed for car wash applications where persistent manifold washout problems exist. Field proven in the most demanding car washes for significant improvement in pump service life.

- Superior corrosion-resistant alloy
- Chrome-plated finish provides wear and discoloration protection
- Lifetime warranty against washout and freezing in self-service or prep unit car wash applications. See Cat Pumps Limited Warranty Statement.

Available Models: 310B, 340B, 350B, 5CP2120B, 5CP2140BCS, 5CP2150B

## "Q" Series Quiet Option

The "Q" option is designed for applications where a reduced sound level is desirable. Through the use of special materials, "Q" series pumps produce 67% less acoustic energy which results in a significant perceptible noise reduction. The "Q" option is currently available in the model 310BQ. Contact Cat Pumps for more information.



Models 310B and 5CP2120B

# Accessories

## Pressure Regulators (CPC Series)

Primary pressure control



7001



7032

Model	Flow Range		Pressure Range	
	gpm	lpm	psi	bar
7001	0.5 - 5	1.9 - 19	100 - 1000	6.9 - 69
7002	0.5 - 5	1.9 - 19	500 - 2000	35 - 138
7003	0.5 - 5	1.9 - 19	1500 - 3000	103 - 207
7011	1 - 10	3.8 - 38	100 - 1000	6.9 - 69
7012	1 - 10	3.8 - 38	500 - 2000	35 - 138
7013	1 - 10	3.8 - 38	1500 - 3000	103 - 207
7021	2.5 - 25	9.5 - 95	100 - 1000	6.9 - 69
7022	2.5 - 25	9.5 - 95	500 - 2000	35 - 138
7023	2.5 - 25	9.5 - 95	1500 - 3000	103 - 207
7031	3.5 - 35	13.2 - 132	250 - 1000	18 - 69
7032	3.5 - 35	13.2 - 132	1000 - 2000	69 - 138
7033	3.5 - 35	13.2 - 132	1500 - 3000	103 - 207
7375	10 - 75	38 - 284	100 - 1000	6.9 - 69
7376	10 - 75	38 - 284	500 - 2000	35 - 138

## Pressure Unloaders

Primary pressure control

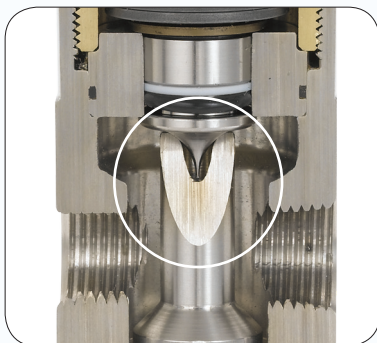
7694



7537

Model	Flow Range		Pressure Range	
	gpm	lpm	psi	bar
7583	0.5 - 8	1.9 - 30	250 - 2000	17 - 138
7620	0.5 - 8	1.9 - 30	100 - 3200	6.9 - 220
7693	2.5 - 10.5	9.5 - 40	230 - 2300	16 - 60
7694	2.5 - 10.5	9.5 - 40	400 - 4050	28 - 280
7537	1 - 21	3.8 - 80	230 - 2600	15.8 - 180
7542	1 - 21	3.8 - 80	800 - 4000	55 - 275
7590	10 - 52	39 - 197	400 - 2175	30 - 150
7593	10 - 52	39 - 197	750 - 4050	52 - 279
9950	50 - 120	189 - 450	100 - 2900	6.9 - 200

# TECHNOLOGY SPOTLIGHT



CPC Series Regulators (7001-7033, 7375-76) exclusively from Cat Pumps are engineered, built and tested in Minneapolis, MN.

### Conical Design Advantages:

- Lowers minimum bypass flow from 10% - 5%, optimizing system performance
- Virtually eliminates cavitation effects across piston and seat, significantly extending life
- Significantly longer service life compared to alternative designs
- Low-pressure override provides smooth and stable operation while reducing wear and energy costs

## Relief Valves

Primary or Secondary Pressure Control

Model	Maximum Flow		Pressure Range	
	gpm	lpm	psi	bar
7500S.100	6	23	100 - 2000	6.9 - 138
7620.100	8.0	30	100 - 3200	6.9 - 220
7694.100	10.5	40	400 - 4050	28 - 280
7542.100	21	80	800 - 4000	55 - 275
7595	53	200	260 - 2600	18 - 180
9950.100	120	456	100 - 2900	6.9 - 200



7694.100



7595

## Pop-off Valves

Secondary Pressure Control

Model	Maximum Flow		Maximum Relief Setting	
	gpm	lpm	psi	bar
33960	6	23	1650	114
33962	6	23	4400	303
9940	25	95	4400	303



33960



9940

## Pulsation Dampeners

316 SS Fitting with Carbon Steel Body, Sealed, Fixed Precharge

Model	Maximum Flow		Pressure Range		Bladder Material	Volume Cubic Inches	Precharge psi
	gpm	lpm	psi	bar			
6026	15	57	300 - 600	20 - 41	NBR	10	250
6028	15	57	600 - 1000	41 - 69	NBR	10	450

316 SS Fitting with Carbon Steel Body, Adjustable Precharge, Rechargeable

Model	Maximum Flow		Pressure Range		Bladder Material	Volume Cubic Inches	Precharge psi
	gpm	lpm	psi	bar			
6029	15	57	100 - 3000	6.9 - 207	NBR	10	450
6018	40	151	100 - 3000	6.9 - 207	NBR	45	450
6015	70	265	100 - 1500	6.9 - 103	NBR	120	450



6018



6029

## Suppressing Pressure Spikes

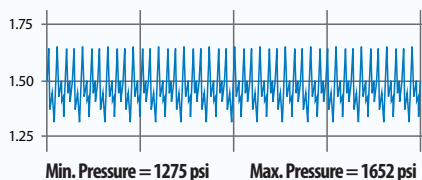
### Decreased Wear Means Fewer Repairs and More Uptime

Due to the design of positive displacement pumps, small pressure spikes are caused during each rotation. In certain operations, these spikes can cause accelerated wear or damage to the pump or downstream components. The installation of a pulsation dampener is your best safeguard against premature wear.

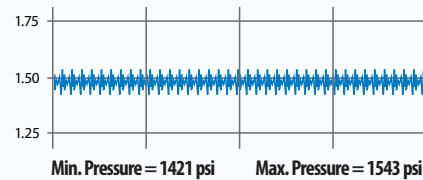
### Pulsation Dampener Benefits:

- Protects downstream components (regulator, unloader, relief valve)
- Produces smooth, consistent flow
- Reduces water hammer
- Improved performance at low rpm

Model 1530 w/o pulsation dampener



Model 1530 w/ pulsation dampener



# Accessories



6088

## Pressure Gauges

Glycerine filled for consistent and accurate readings

Model	Maximum Pressure		Fitting	Port
	psi	bar		
6086	1500	103	Brass	1/4" NPT(M)
6088	3000	207	Brass	1/4" NPT(M)
6089	6000	415	Brass	1/4" NPT(M)



7401.4

## Inlet Filters

Clear Nylon Body

Model	Suction/ Pressurized Flow		Screen		Ports	
	gpm	lpm	Mesh	Material	Inlet	Discharge
7104.4	6/10	23/38	80	S	1/2" NPT(F)	1/2" NPT(F)
7105.5	15/20	57/76	80	S	3/4" NPT(F)	3/4" NPT(F)
7106.6	20/25	76/95	80	S	1" NPT(F)	1" NPT(F)
7107.7	35/50	133/189	80	S	1-1/4" NPT(F)	1-1/4" NPT(F)
7108.8	60/75	227/284	80	S	1-1/2" NPT(F)	1-1/2" NPT(F)



75S100

## Inlet Pressure Regulators

Stainless Steel – Adjustable

Model	Maximum Flow		Inlet Pressure		Outlet Pressure		Ports	
	gpm	lpm	psi	bar	psi	bar	Inlet	Outlet
75S075	0 - 12	0 - 45	350	24	15 - 85	1.03 - 5.86	3/4" NPT(F)	3/4" NPT(F)
75S100	0 - 20	0 - 76	350	24	15 - 85	1.03 - 5.86	1" NPT(F)	1" NPT(F)
75S150	0 - 50	0 - 189	350	24	15 - 85	1.03 - 5.86	1-1/2" NPT(F)	1-1/2" NPT(F)
75S200	0 - 75	0 - 284	350	24	15 - 85	1.03 - 5.86	2" NPT(F)	2" NPT(F)



36140

## Shut-off and Weep Guns

Brass (internal body)

Model	Maximum Flow		Maximum Pressure		Type	Ports	
	gpm	lpm	psi	bar		Inlet	Discharge
76165	8	30	4000	275	Shut-off	3/8" NPT(F)	1/4" NPT(F)
76168	8	30	4000	275	Weep	3/8" NPT(F)	1/4" NPT(F)
36140	10.5	40	5000	345	Shut-off	3/8" NPT(F)	1/4" NPT(F)
36141	10.5	40	5000	345	Weep	3/8" NPT(F)	1/4" NPT(F)
39415	32	121	1750	120	Shut-off	1/2" BSP(F)	1/2" BSP(F)
39420	53	200	2900	200	Shut-off	3/4" BSP(F)	1/2" BSP(F)



# K-Series Pumps

## K-Series Centrifugal Pumps

Submersible, End-Suction and Multistage

Model	Flow Range		Pressure Range		Horse Power Range
	gpm	lpm	psi	bar	
Submersible Pumps - 1K and 2K Series	5 - 180	19 - 681	2.2 - 32	5 - 74	1/3 - 2 HP
End Suction, Single Stage Pumps - 3K Series	5.5 - 90	21 - 340	10 - 63	23 - 145	1/3 - 5 HP
End Suction, Two Stage Pumps - 3K Series	5.5 - 66	21 - 250	42 - 106	98 - 245	2 - 5 HP
End Suction, Single Stage Pumps - 4K Series	13 - 380	49 - 1438	3.5 - 108	8 - 250	1 - 15 HP
Vertical Multi-Stage Pump - 8K Series	3 - 390	11 - 1476	10 - 402	24 - 930	1/2 - 50 HP

## More Solutions for Pumping Needs

The K-Series pumps offer solutions for many high flow, low pressure industrial pumping needs, whether it is the pumping of fresh water, semi-dirty water or liquids with some suspended solids.

There are over 100 models to choose from including options for manual or automatic, single or three phase, TEFC or open-drip. Centrifugal pumps are available with optional chemical resistant or high temperature seals and flanged or standard NPT fittings. Both pump kits or motorized units are available.

## Benefits

The K-series submersible, end-suction and multistage centrifugal pumps are built of stainless steel for long lasting performance and corrosion resistance. These high quality components offer a stronger, lighter weight and more durable pump than the conventional cast iron pumps.

A special technology has been developed to pressure bulge form the stainless steel components for these pumps. The result of this new process is superior quality, greater strength, increased efficiencies, lighter weight, continuous-duty performance and exceptional value.



1K Series



2K Series



3K Single-Stage



3K Two-Stage



4K Single-Stage



8K Vertical Multi-Stage

# Online Service and Support Videos

Cat Pumps offers a variety of training and support services to our sales partners and customers. High-pressure systems require special attention to achieve safe and reliable operation. Optimum performance of the pump depends upon the entire system, determined by proper design, component selection, installation,

and maintenance of the pump as well as system accessories. With proper design, installation, and care, high-pressure pumps and systems from Cat Pumps can provide thousands of hours of trouble-free service.

## Service Videos

Learn how to service seal and valve kits in these authorized Cat Pumps videos, hosted on Cat Pumps YouTube channel and website. Find them at these links:

[www.catpumps.com/service](http://www.catpumps.com/service)

[www.catpumps.com/youtube](http://www.catpumps.com/youtube)



## Training Videos

Informative "Whiteboard Sessions" videos cover a variety of technical topics in short and easy-to-comprehend lessons conducted by Cat Pumps engineering. Find them at these links:

[www.catpumps.com/whiteboard-sessions.asp](http://www.catpumps.com/whiteboard-sessions.asp)

[www.catpumps.com/youtube](http://www.catpumps.com/youtube)



# Protect Your Business Investment with Cat Pumps



Business owners, managers, and operators understand the value of being open and ready for business. They realize the consequences of lost production and missed schedules. Business reputations are made on reliability and performance. That is why Cat Pumps never compromises on quality. Our customers trust our products to keep their businesses running.

Cat Pumps remains firmly committed to its original mission and one that accounts for being the worldwide leader in high-pressure pumps and systems:

*"It is the mission of Cat Pumps to manufacture the longest-lasting, most dependable high-pressure pumps possible and back them with outstanding service and availability from stock."*



## Serving Car Washes for Over 50 Years

In 1966, an engineer named William Bruggeman set off on a project to solve a problem that had been plaguing the high-pressure pump industry for years — unreliable performance and costly breakdowns. After two years of development and testing, the result was the revolutionary Uniflow™ pump design.

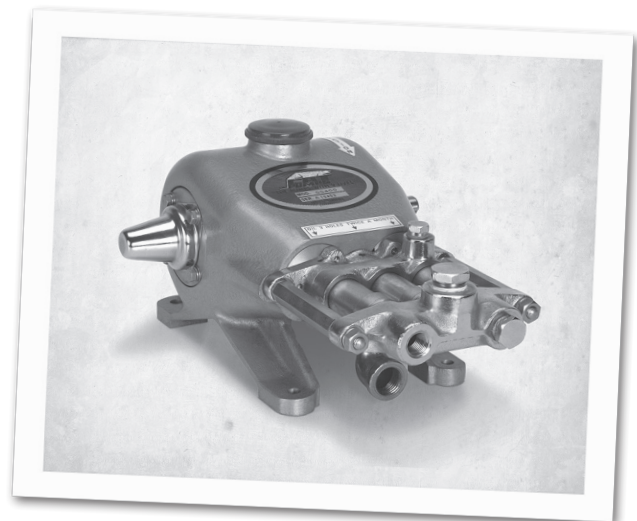
In 1968, William Bruggeman took his revolutionary design to the vehicle wash market with the model 400 piston pump. He named his new company “Cat Pumps,” which was a reflection of the incredibly long service life, earning the reputation as the “Pumps with Nine Lives.” Building on this foundation, Cat Pumps quickly grew into the leading carwash supplier in North America.

To meet the growing demand for the emerging carwash market in Europe, Cat Pumps opened its first international branch location in Belgium in 1972. This new office offered sales, technical and service support, and a full line of Cat Pumps inventory. Branch offices in Germany and England soon followed, with an international group being established in its Minnesota-based corporate office.

Today, Cat Pumps are in use in thousands of applications around the globe. The Cat Pumps product line has grown to include over 1,000 pump models, reaching flow capabilities to 240 gpm and pressure capabilities to 10,000 psi.



Founder William Bruggeman, 1968



## ABOUT CAT PUMPS

## Proven Quality, Customer Focused

Cat Pumps is the world leader in the design, manufacture and marketing of the most dependable high-pressure positive displacement reciprocating triplex pumps and systems in the market. Our mission to exceed customer expectations for quality, reliability, availability, delivery, technical expertise and aftermarket support to assure the best value in all the industries served.

## LOCATIONS

### Worldwide Headquarters

#### Cat Pumps

1681 94th Lane Northeast  
Minneapolis, MN 55449  
USA

P: 763-780-5440  
F: 763-780-2958  
techsupport@catpumps.com  
www.catpumps.com

**Territories Served**  
U.S., Canada

#### International Division

P: 763-780-5440  
F: 763-785-4329  
intlsales@catpumps.com  
www.catpumps.com

**Territories Served**  
Africa, Asia, Australia, Central and  
South America, Mexico, Middle East,  
New Zealand, Turkey

#### Cat Pumps International N.V.

Heiveldekens 6A  
2550 Kontich  
Belgium  
P: 32 3 450 71 50  
F: 32 3 450 71 51  
cpi@catpumps.be  
www.catpumps.be

**Territories Served**  
Western Europe (except U.K.,  
Germany, and Austria)

#### Cat Pump (U.K.) Ltd.

1 Fleet Business Park, Sandy Lane  
Church Crookham  
FLEET, Hampshire GU52 8BF  
England

P: +44 1252 622031  
F: +44 1252 626655  
sales@catpumps.co.uk  
technical@catpumps.co.uk  
www.catpumps.co.uk

**Territories Served**  
U.K. and Ireland

#### Cat Pumps Deutschland GmbH

Buchwiese 2, D-65510  
Idstein  
Germany

P: +49 6126 9303 0  
F: +49 6126 9303 33  
catpumps@t-online.de  
www.catpumps.de

**Territories Served**  
Austria, Commonwealth of Independent States  
(CIS), Germany and Eastern Europe

## SALES, DISTRIBUTION, SERVICE

Call today for product and application assistance.  
763-780-5440 or visit us at [www.catpumps.com](http://www.catpumps.com)



#### CAT PUMPS

1681 - 94TH LANE N.E. MINNEAPOLIS, MN 55449-4324  
PHONE (763) 780-5440 — FAX (763) 780-2958  
e-mail: [info@catpumps.com](mailto:info@catpumps.com)  
[www.catpumps.com](http://www.catpumps.com)