

DATA SHEET

VERTICAL MULTISTAGE PUMP



**316 Stainless
Steel Model:**

8S64K1S9T1F



SPECIFICATIONS

Size

Suction 300# ANSI raised face 4.00"

Discharge 300# ANSI raised face 4.00"

HP 10 HP

RPM 3450 RPM

Liquid Handled

Type of Liquid Clean water (for other clean liquids, consult factory)

Temperature 5° to +248° F (-15° to 120° C)

Working Pressure 232 psi (16 bar) maximum

Materials

Impeller AISI 316

Intermediate Casing AISI 316

Bottom Casing AISI 316

Casing Cover AISI 316

Outer Casing AISI 316

Shaft AISI 316L

Liner Ring PTFE/AISI 316

Motor Bracket Cast iron/AISI 316

Base Cast iron/AISI 316

Lower Pump Bearings Tungsten carbide

Mechanical Seal Silicon/Carbide/Carbon/FPM

Motor

Type NEMA 215TC frame, TEFC

Speed 60 Hz, 3450 RPM (2 poles)

Single Phase 230V

Direction of Rotation Clockwise when viewed from motor end

Test Standard ISO 9906 annex A

Weight

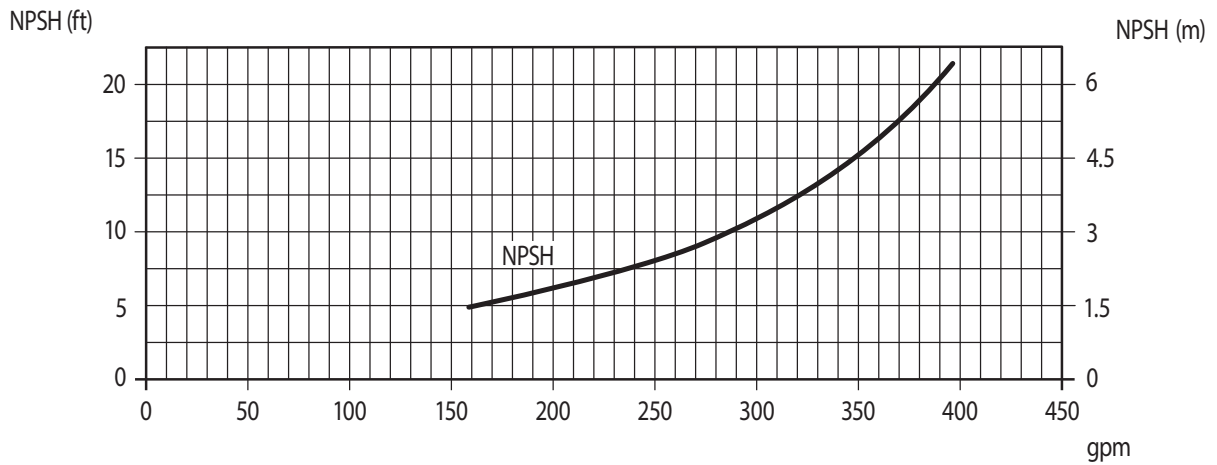
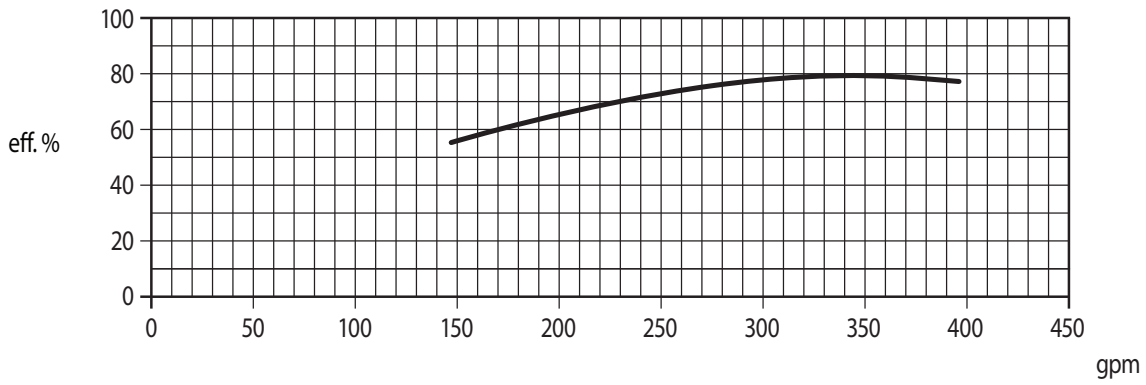
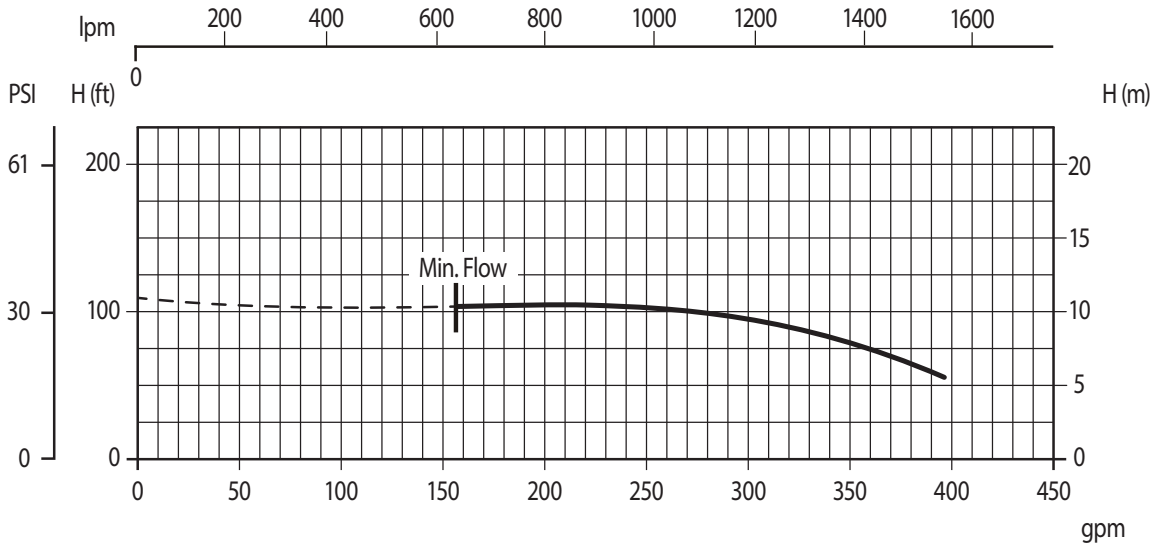
Pump 179 lbs

Motor 167 lbs

NOTE: See PN 99SVM001 for complete operating instructions, installation and maintenance manual information.

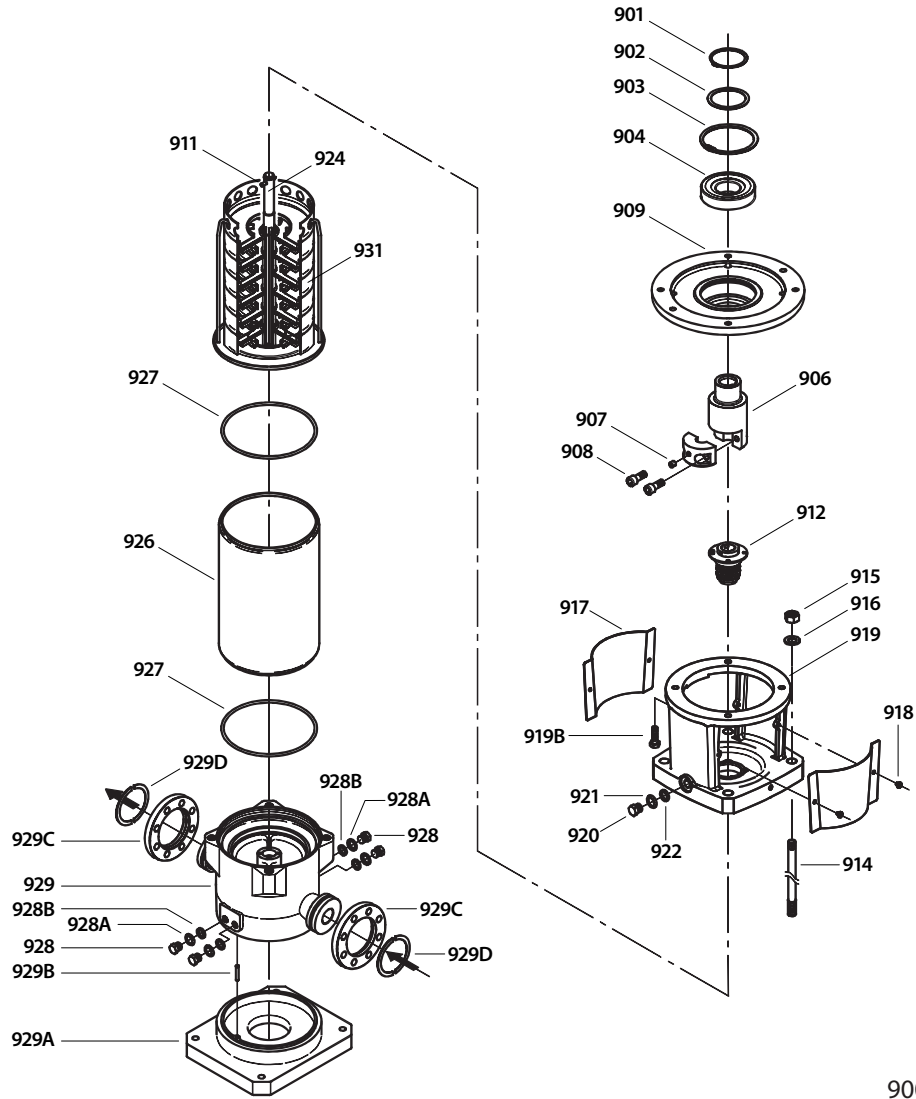
PERFORMANCE CURVE – 3450 RPM

395 gpm, 105 Head ft.



Water Temperature: 68° F (20° C)

EXPLODED VIEW



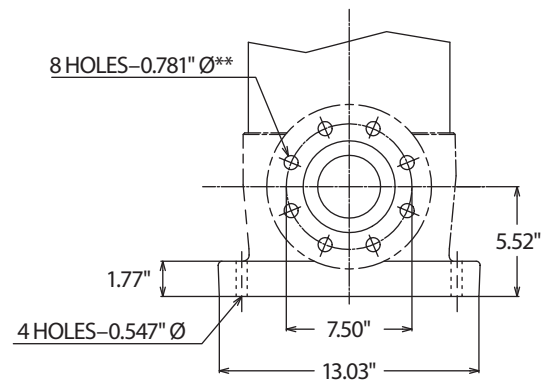
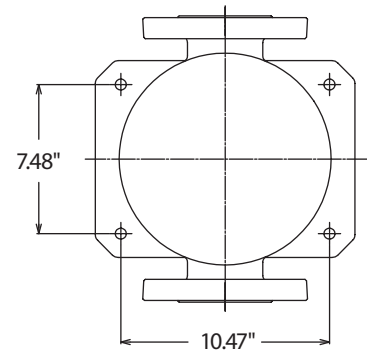
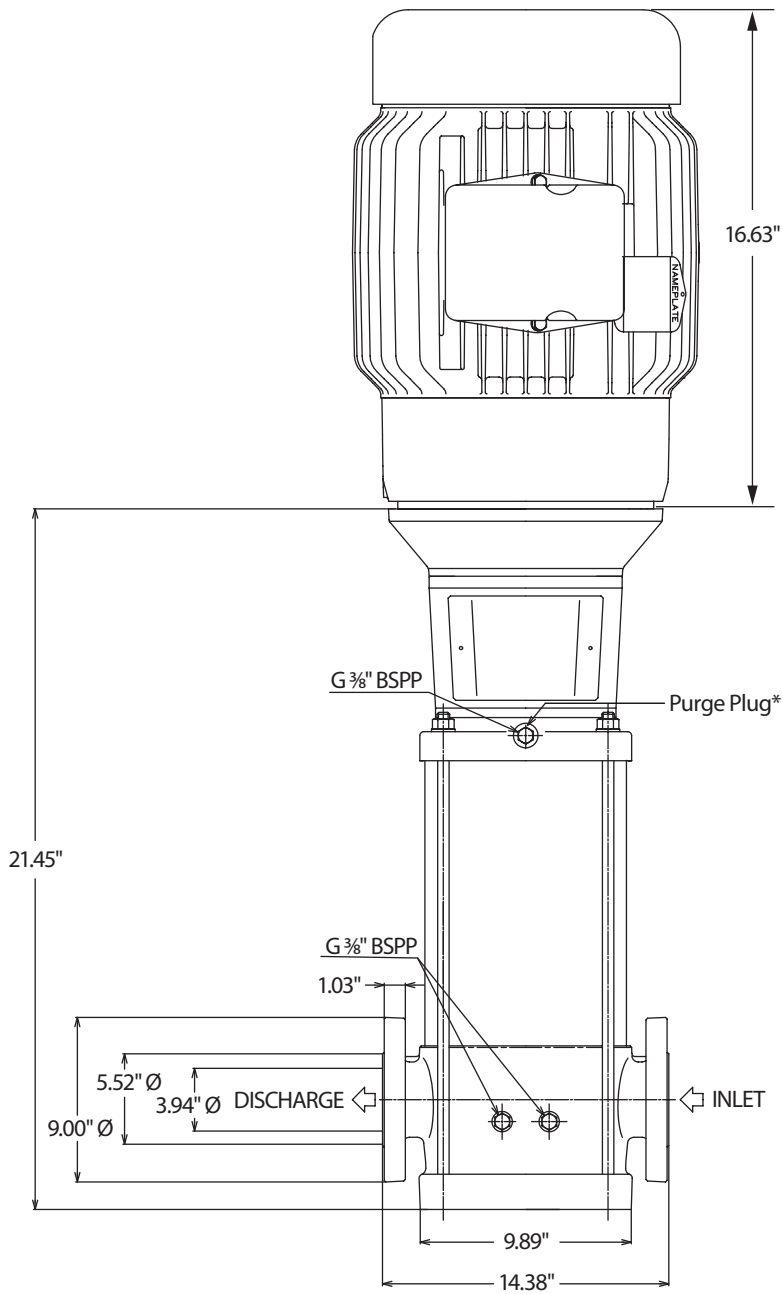
900 Motor not Shown

PARTS LIST

PART	PART
ITEM NUMBER	ITEM NUMBER
MATL	MATL
DESCRIPTION	DESCRIPTION
QTY	QTY
900	924
—	—
—	SSL
Motor, Electric (not shown)	Shaft
1	1
901	925
—	SS
Ring, Snap, C-Type	Nut, Impeller (Not Shown)
1	1
902	926
—	SS
Spacer	Casting, Outer
1	1
903	927
—	FPM
Ring, Snap, C-Type	O-Ring, Outer Casing
1	2
904	928
—	SS
Bearing, Ball	Plug, Drain
1	4
906	928A
—	SS
Coupling, Lower (2-Piece)	Washer, Drain Plug
1	4
907	928B
—	FPM
Screw, Set	O-Ring, Drain Plug
1	4
908	929
—	SS
Screws, Coupler	Casing, Bottom
2	1
909	929A
—	F
Housing, Bearing	Base
1	1
910	929B
—	—
Key (Not Shown)	Pin (Shaft)
1	1
911	929C
—	STL
Cover, Suction	Flange, Pump
1	2
912	929D
—	STL
Seal, Mechanical	Ring, Adjusting
1	2
914	930
—	—
Rod, Tie	Kit, Seal (Includes mechanical seal and 2 outer casing O-rings)
4	1
915	931
—	—
Nut, Tie Rod	Kit, Hydraulic
4	1
916	
—	
Washer, Tie Rod	Includes: Hydraulic Assembly
4	
917	
—	
Guard, Coupling	Upper and lower casing O-rings
2	
918	
—	
Screw, Coupling Guard	Pump shaft key
2	
919	
—	
Bracket, Motor	Pumps coupling snap ring
1	
919B	
—	
Screw, Bearing Housing	Mechanical seal with O-rings
4	
920	
—	
Plug, Vent	
1	
921	
—	
Washer, Vent Plug	
1	
922	
—	
O-Ring, Vent Plug	
1	

Italics are optional items

Material Codes (Not part of part number): F = Cast Iron, FPM = Fluorocarbon, FSC = FPM w/Silicon Carbide, S = 304 Stainless Steel, SS = 316 Stainless Steel, SSL = 316SS/Low Carbon
STL = Steel, STZP = Steel/Zinc Plated



* All air must be purged out before operation to prevent seal damage.

** Flange tightening torque= 74 ft-lbs.

⚠ CAUTIONS AND WARNINGS

All high-pressure systems require a primary pressure regulating device (i.e. regulator, unloader) and a secondary pressure relief device (i.e. pop-off valve, relief valve). Failure to install such relief devices could result in personal injury or damage to pump or property. Cat Pumps does not assume any liability or responsibility for the operation of a customer's high-pressure system.

Read all CAUTIONS and WARNINGS before commencing service or operation of any high-pressure system. The CAUTIONS and WARNINGS are included in each Service Manual and with each Accessory Data sheet. CAUTIONS and WARNINGS can also be viewed online at www.catpumps.com/dynamic-literature/cautions-and-warnings or can be requested directly from Cat Pumps.

WARRANTY

View the Limited Warranty online at www.catpumps.com/literature/cat-pumps-limited-warranty