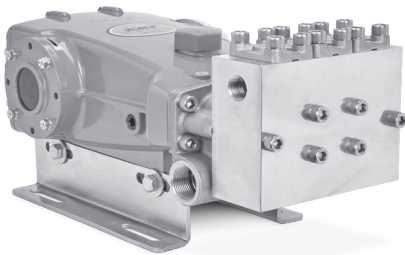


DATA SHEET

25 FRAME PLUNGER PUMP



Brass Model: 2565T13



Model 2565T13 Shown
(Rails sold separately)

FEATURES

- 13-tooth hollow spline shaft allows for direct mounting of 2 or 4-bolt SAE B hydraulic motors to the pump, significantly reducing the space requirement.
- Solid machined brass block discharge manifold safeguards the pump against high-pressure spikes, cavitation and flaking.
- Wet-end is easy to service without entering the crankcase.
- Direct-driven design allows for variable flow rates by controlling hydraulic flow to the motor.
- Stacked 316 stainless steel inlet and discharge valves provide long life and superior ease of service.

SPECIFICATIONS	U.S. Measure	Metric Measure
Flow	20 gpm	75.7 lpm
Pressure Range	100–3000 psi	6.9–207 bar
Pump RPM*	1450 rpm	1450 rpm
Inlet Pressure Range	Flooded to 70 psi	Flooded to 4.8 bar
Maximum Liquid Temp. (NBR)	140° F	60° C
Bore	0.984"	25 mm
Stroke	1.516"	38.5 mm
Crankcase Capacity	84 oz	2.5 l
Inlet Ports (2)	1¼" NPT(F)	1¼" NPT(F)
Discharge Ports (2)	¾" NPT(F)	¾" NPT(F)
Hollow Shaft	0.875" Spline – 1/32 Pitch, 13-Tooth	
Motor Mounting	SAE B, 2 or 4-Bolt	
Weight	92.6 lbs	42 kg
Dimensions	20.35 x 10.66 x 8.58"	517 x 271 x 218 mm

*Pump minimum is 100 RPM.

DETERMINING THE PUMP RPM

$$\frac{\text{Rated gpm}}{\text{Rated rpm}} = \frac{\text{Desired gpm}}{\text{Desired rpm}}$$

DETERMINING TORQUE

$$\text{Torque} = \frac{3.6 \times (\text{gpm} \times \text{psi})}{\text{rpm}}$$

Refer to pump **Service Manual** for repair procedure and additional technical information.

PARTS LIST

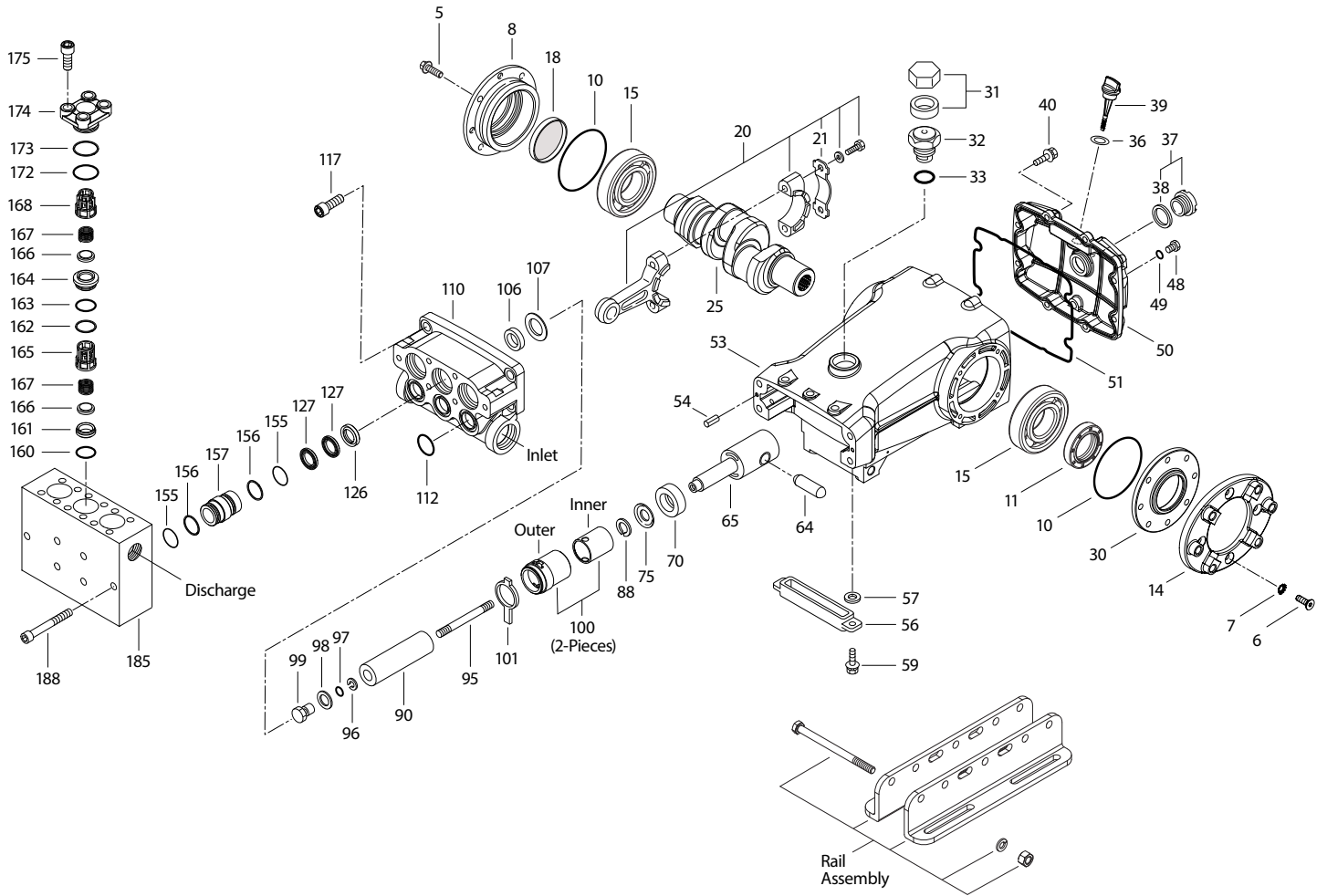
ITEM	PART NUMBER	MATL	DESCRIPTION	QTY
5	126544	STCP R	Screw, HHC Sems (M8 x 25) (See Tech Bulletin 074)	4
6	670249	S	Screw (M8 x 30) (See Tech Bulletin 074)	4
7	992879	S	Lockwasher (M8)	4
8	134966	ALE	Cover, Bearing	1
10	27772	NBR	O-Ring, Bearing Cover-70D	2
11	27771	NBR	Seal, Oil, Crankshaft	1
14	32337	AL	Flange, Adapter, SAE B	1
15	26512	STL R	Bearing, Ball	2
18	670247	NBR	Seal, Blind	1
20	126809	BZ	Assembly, Connecting Rod (Includes Item: 21) (See Tech Bulletin 074)	3
21	126562	STCP R	Washer, Locking (M10)	3
25	670244	FCM	Crankshaft, Hollow-Spline, T13 (M38.5)	1
30	670012	ALE	Cover, Bearing, Unpainted	1
31	828710	PE	Protector, Oil Cap with Polyurethane Gasket	1
32	43211	ABS	Cap, Oil Filler	1
33	14177	NBR	O-Ring, Oil Filler Cap-70D	1
36	129343	RBR	Gasket, Dipstick	1
37	92241	PC	Gauge, Bubble, Oil with Gasket-80D (See Tech Bulletin 074)	1
38	44428	NBR	Gasket, Flat, Oil Gauge-80D	1
39	27769	ABS	Dipstick	1
40	126544	STCP R	Screw, HHC Sems (M8 x 25) (See Tech Bulletin 074)	8
48	25625	STCP	Plug, Drain (1/4" x 19 BSP)	1
49	23170	NBR	O-Ring, Drain Plug-70D	1
50	133582	ALE	Cover, Rear	1
51	27767	NBR	O-Ring, Rear Cover-70D	1
53	133609	ALE	Crankcase Assembly (Includes Item: 54)	1
54	27488	S	Pin, Guide	2
56	27790	POP	Pan, Oil	1
57	22981	STCP R	Washer, Oil Pan	2
59	125824	STCP R	Screw, HHC Sems (M6 x 16)	2
64	27784	CM	Pin, Crosshead	3
65	134716	SSBZ	Rod, Plunger	3
70	27785	NBR	Seal, Oil, Crankcase	3
75	110669	S	Slinger, Barrier	3
88	110670	S	Washer, Keyhole	3
90	134968	CC	Plunger (M25 x 93)	3
95	126557	STCP R	Stud, Plunger Retainer (M7 x 71)	3
96	20184	PTFE	Backup Ring, Plunger Retainer	3
97	14190	NBR	O-Ring, Plunger Retainer-70D	3
98	44069	SS	Gasket, Plunger Retainer	3
99	44068	SS	Retainer, Plunger (M7) (See Tech Bulletin 074)	3
100	49788	NY	Retainer, Seal (Outer)	3
	49789	NY	Retainer, Seal (Inner)	3
101	48487	—	Wick	3
106	44086	NBR	Seal, Low-Pressure with SS-Spring	3
107	48537	BB	Washer, Low-Pressure	3
110	134970	FBB	Manifold, Inlet	1
112	11379	NBR	O-Ring, Inlet Manifold-70D	3
117	88398	S	Screw, HSH (M12 x 40) (See Tech Bulletin 074)	4
126	134971	BB	Adapter, Female	3
127	134972	SNG	V-Packing	6
155	11442	NBR	O-Ring, Spacer, V-Packing	6
156	23086	PTFE	Backup Ring, Spacer, V-Packing	6
157	670240	S	Spacer, V-Packing	3
160	49092	NBR	O-Ring, Inlet Valve Seat-80D	3
161	49091	NBR	Seat, Inlet	3
162	49088	PTFE	Backup Ring, Discharge Seat	3
163	49087	NBR	O-Ring, Discharge Seat-70D	3
164	49086	S	Seat, Discharge	3
165	49090	PVDF	Retainer, Inlet Spring	3
166	49089	S	Valve	6
167	44109	SS	Spring	6
168	49085	PVDF	Retainer, Discharge Spring	3
172	18690	NBR	O-Ring, Valve Plug-70D	3
173	20369	PTFE	Backup Ring, Valve Plug	3
174	134977	FBB	Plug, Valve	3
175	89921	S	Screw, HSH (M12 x 30) (See Tech Bulletin 074)	12
185	134975	BB	Manifold, Discharge	1
188	49045	S	Screw, HSH (M12 x 95) (See Tech Bulletin 074)	6

Italics are optional items. R Components comply with RoHS Directive.

* Review material codes for individual items (SNG generally may be used as alternate). For additional technical information see www.catpumps.com/literature/tech-bulletins
 MATERIAL CODES (Not Part of Part Number): ABS=ABS Plastic AL=Aluminum ALE=Aluminum Epoxy BB=Brass BZ=Bronze CC=Ceramic CM=Chrome-Moly
 D=Acetal FBB=Forged Brass FCM=Forged Chrome-Moly NBR=Medium Nitrile (Buna-N) NY=Nylon PC=Poly Carbonate PE=Polyethylene POP=Polypropylene
 PTFE=Pure Polytetrafluoroethylene PVDF=Polyvinylidene Fluoride RBR=Rubber S=304SS SNG=Special Blend (Buna) SS=316SS SSBZ=316SS/Bronze
 STCP=Steel/Chrome Plated STL=Steel STZP=Steel/Zinc Plated

Optional Parts and Accessories and Service Parts listed on page 3. Standard Seal and Valve Kits listed on page 4.

EXPLODED VIEW



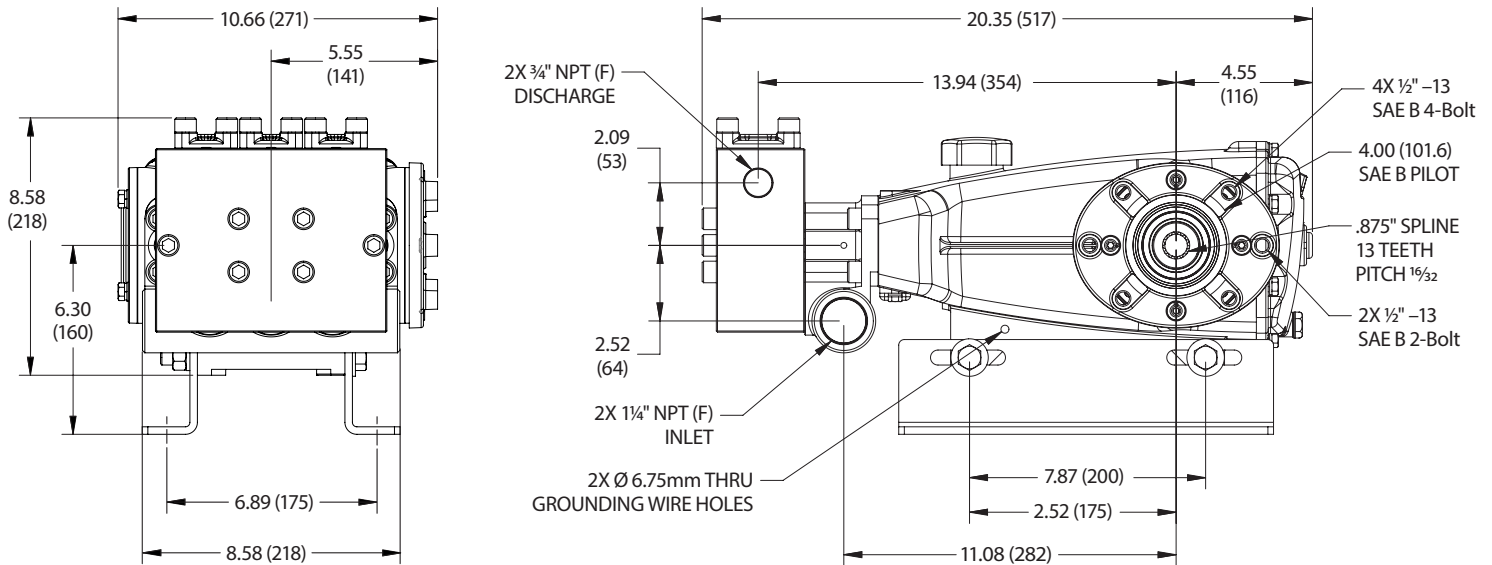
Model
2565T13
June 2024

OPTIONAL PARTS AND ACCESSORIES

PART	DESCRIPTION	QTY
30614	Assembly, Rail	1

SERVICE PARTS

PART	DESCRIPTION	QTY
76854	Seal Kit – Standard NBR	1
31292	Valve Kit – Standard NBR	1
6107	Oil, Bottle (21 oz bottle) (Fill to Specified Crankcase Capacity Prior to Start-up)	4
6124	Gasket, Liquid (3 oz)	1
30696	Reverse Pliers (Not Shown)	1



SEAL KITS One (1) seal kit required per pump

PUMP MODELS	NBR (STD)
2565T13	76854*

ITEM (Included in Seal Kits)	DESCRIPTION	QTY
97	14190 O-Ring, Plunger Retainer	3
106	44086 Seal, Low-Pressure with SS-Spring	3
112	11379 O-Ring, Inlet Manifold	3
127	134972 V-Packing	6
155	11442 O-Ring, Spacer, V-Packing	6
156	23086 Backup Ring, Spacer, V-Packing	6

*Review material codes for individual items (SNG may be used as alternative)

VALVE KITS One (1) valve kit required per pump

PUMP MODELS	NBR (STD)
2565T13	31292

ITEM (Included in Valve Kits)	DESCRIPTION	QTY
160	49092 O-Ring, Inlet Valve Seat	3
161	49091 Seat, Inlet	3
162	49088 Backup Ring, Valve Seat	3
163	49087 O-Ring, Valve Seat	3
164	49086 Seat, Discharge	3
165	49090 Retainer, Inlet Spring	3
166	49089 Valve	6
167	44109 Spring	6
168	49085 Retainer, Discharge Spring	3
172	18690 O-Ring, Valve Plug	3
173	20369 Backup Ring, Valve Plug	3

⚠ CAUTIONS AND WARNINGS

All high-pressure systems require a primary pressure regulating device (e.g. regulator, unloader) and a secondary pressure relief device (e.g. pop-off valve, relief valve). Failure to install such relief devices could result in personal injury or damage to pump or property. Cat Pumps does not assume any liability or responsibility for the operation of a customer's high-pressure system. Read all CAUTIONS and WARNINGS before commencing service or operation of any high-pressure system. The CAUTIONS and WARNINGS are included in each Service Manual and with each Accessory Data sheet. CAUTIONS and WARNINGS can also be viewed online at www.catpumps.com/dynamic-literature/cautions-and-warnings or can be requested directly from Cat Pumps.

WARRANTY

View the Limited Warranty online at www.catpumps.com/literature/cat-pumps-limited-warranty